

WAAS CH 97532 W16A	APP CRS 164°	Rwy Ldg TDZE Apt Elev	4500 1299 1304
--	------------------------	-----------------------------	---

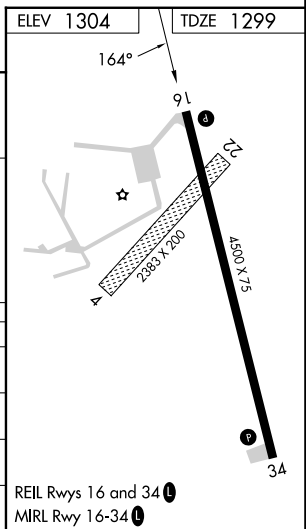
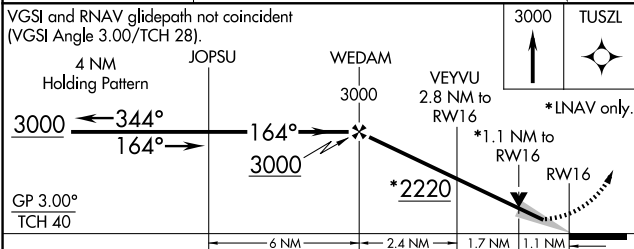
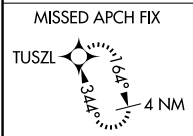
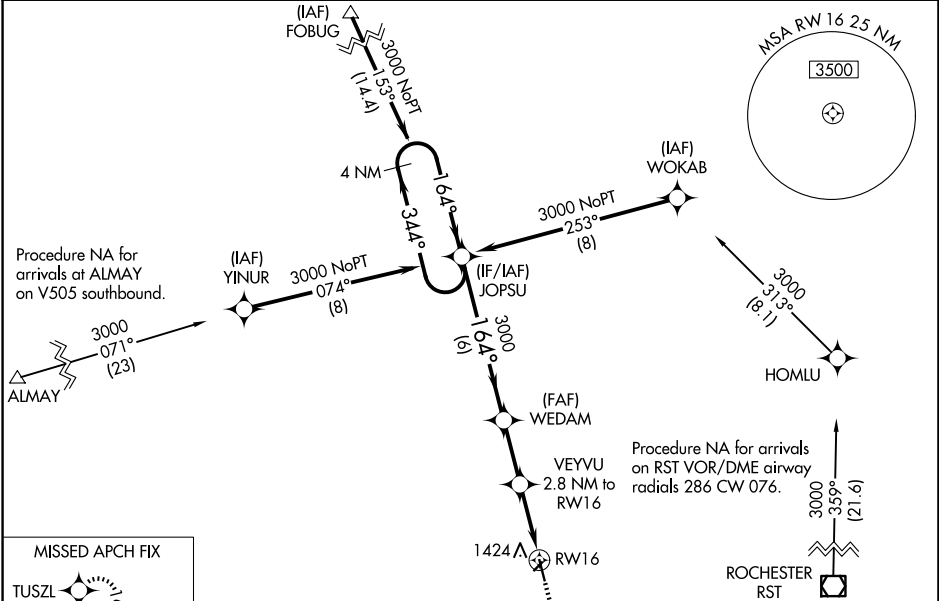
RNAV (GPS) RWY 16

DODGE CENTER (TOB)

⚠ For uncompensated Baro-VNAV systems, LNAV/VNAV NA below -17°C (2°F) or above 54°C (130°F). DME/DME RNP-0.3 NA. Baro-VNAV and VDP NA with Rochester Inlt altimeter setting. When local altimeter setting not received, use Rochester Inlt altimeter setting and increase all DA 39 feet and all MDA 40 feet, and increase LNAV/VNAV all Cats, LNAV Cat C visibility 1/8 mile, and Circling Cat C visibility 1/4 mile.

MISSED APPROACH: Climb to 3000 direct TUSZL and hold.

AWOS-3PT 119.075	ROCHESTER APP CON* 119.8 251.125	CTAF 122.9
----------------------------	--	----------------------



CATEGORY	A	B	C	D
LPV DA		1549-1	250 (300-1)	NA
LNAV/VNAV DA		1586-1	287 (300-1)	NA
LNAV MDA	1680-1	381 (400-1)	1680-1 1/8 381 (400-1 1/8)	NA
CIRCLING	1960-1	656 (700-1)	1960-1 3/4 656 (700-1 3/4)	NA

REIL Rwy 16 and 34
MIRL Rwy 16-34

NC-1, 11 JUN 2026 to 09 JUL 2026

NC-1, 11 JUN 2026 to 09 JUL 2026