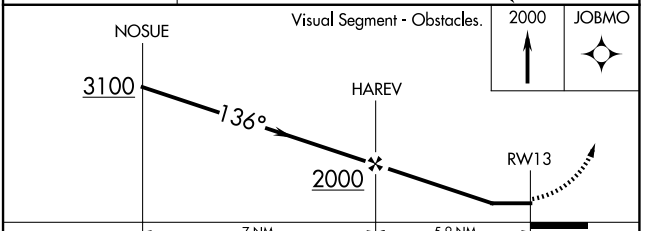
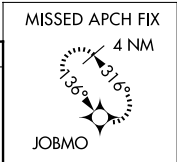
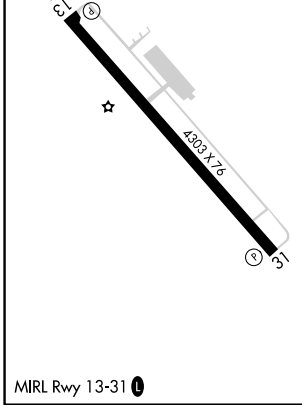
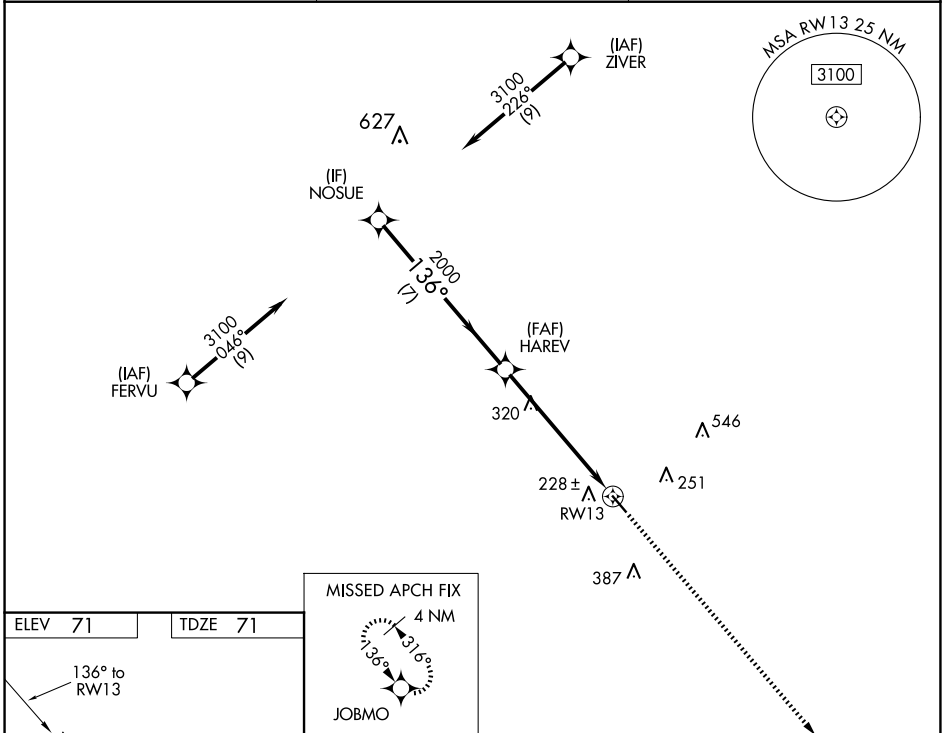


WAAS CH 58242 W13A	APP CRS 136°	Rwy Idg 4303 TDZE 71 Apt Elev 71
--	------------------------	---

RNAV (GPS) RWY 13

HAWTHORNE FLD (45R)

RNP APCH-GPS.		MISSED APPROACH: Climb to 2000 direct JOBMO and hold.
<p>▽ Procedure NA at night. Rwy 13 helicopter visibility reduction below 1 SM NA. Use Beaumont/Port Arthur altimeter setting; when not received use Orange altimeter setting.</p> <p>△ NA</p>		
BPT ASOS 126.3	HOUSTON APP CON 121.3 377.1	UNICOM 122.8 (CTAF) 0



CATEGORY	A	B	C	D
LP MDA	700-1	629 (700-1)	700-1 ³ / ₄ 629 (700-1 ³ / ₄)	NA
LNAV MDA	720-1	649 (700-1)	720-1 ⁷ / ₈ 649 (700-1 ⁷ / ₈)	NA
CIRCLING	720-1	649 (700-1)	880-2 ¹ / ₄ 809 (900-2 ¹ / ₄)	NA

SC-5, 11 JUN 2026 to 09 JUL 2026

SC-5, 11 JUN 2026 to 09 JUL 2026