

LOC/DME I-AXH <b>108.9</b> Chan <b>26</b>	APP CRS <b>089°</b>	Rwy Ldg <b>5002</b> TDZE <b>69</b> Apt Elev <b>69</b>
---	------------------------	---

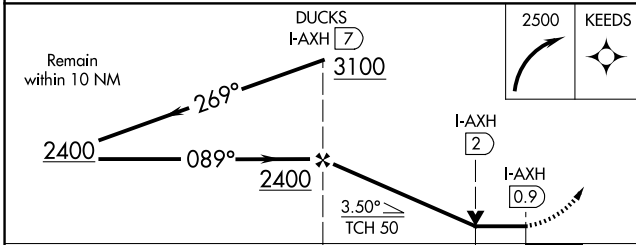
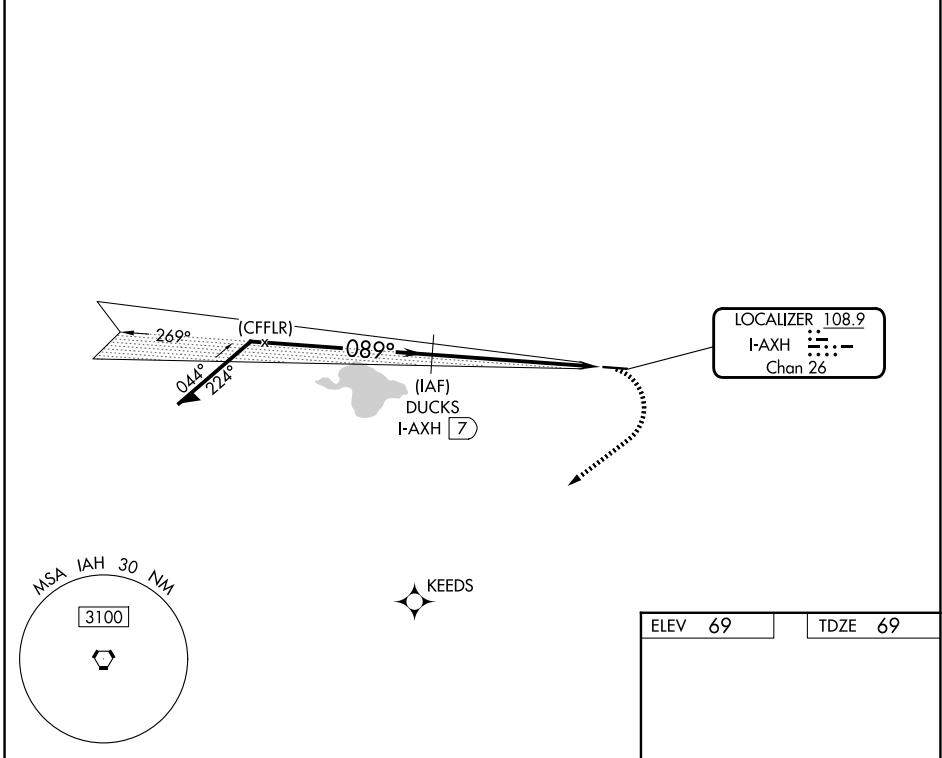
# LOC RWY 9

HOUSTON/SOUTHWEST (AXH)

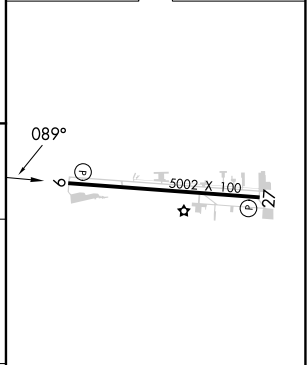
RNAV 1-GPS.  
 ▼  
 ▲ NA Rwy 9 helicopter visibility reduction below ¾ SM NA.

MISSED APPROACH: Climbing right turn to 2500 direct KEEDS.

AWOS-3 <b>123.625</b>	HOUSTON APP CON <b>123.8 257.7</b>	CLNC DEL <b>120.8</b>	UNICOM <b>123.0 (CTAF) 0</b>
--------------------------	---------------------------------------	--------------------------	---------------------------------



ELEV <b>69</b>	TDZE <b>69</b>
----------------	----------------



CATEGORY	A	B	C	D
S-LOC 9	540-1	471 (500-1)	540-1 <sup>3</sup> / <sub>8</sub> 471 (500-1 <sup>3</sup> / <sub>8</sub> )	NA
CIRCLING	580-1	511 (600-1)	700-1 <sup>3</sup> / <sub>4</sub> 631 (700-1 <sup>3</sup> / <sub>4</sub> )	NA

REIL Rwys 9 and 27 0  
 MIRL Rwy 9-27 0

SC-5, 11 JUN 2026 to 09 JUL 2026

SC-5, 11 JUN 2026 to 09 JUL 2026