

WAAS CH <b>86817</b> <b>W13A</b>	APP CRS <b>133°</b>	Rwy Ldg TDZE Apt Elev	<b>4698</b> <b>2348</b> <b>2349</b>
--	------------------------	-----------------------------	---

# RNAV (GPS) RWY 13

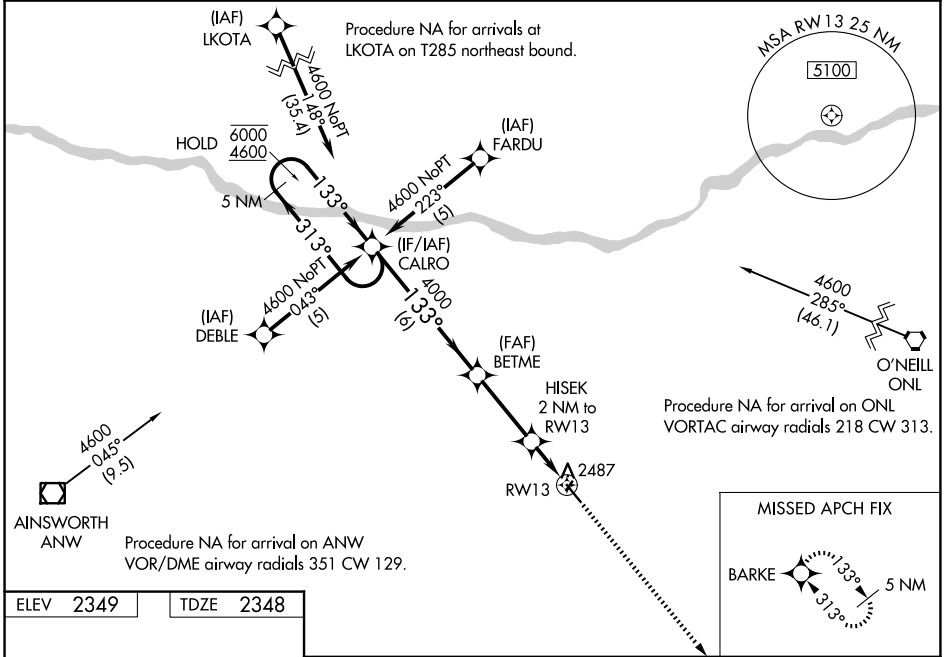
ROCK COUNTY (R.B.E.)

RNP APCH.

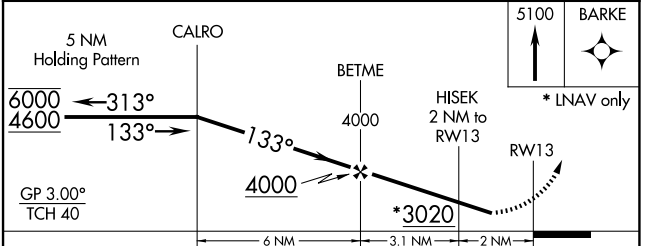
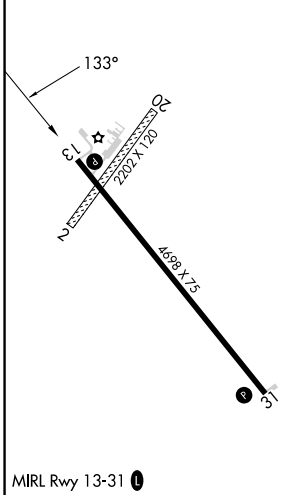
**NA** Circling NA to Rwy 2 and 20. Rwy 13 helicopter visibility reduction below 1 SM NA. Baro-VNAV NA. Use Ainsworth altimeter setting; when not received, use O'Neill altimeter setting and increase LPV DA to 2778 feet and visibility ¼ SM, LNAV/VNAV DA to 2815 feet and visibility ¼ SM; increase all MDAs 60 feet. Straight-in Rwy 13 NA at night, Circling Rwy 13 NA at night.

MISSED APPROACH: Climb to 5100 direct BARKE and hold.

ANW AWOS-3 <b>118.325</b>	DENVER CENTER <b>127.95 338.2</b>	CTAF <b>122.90</b>
------------------------------	--------------------------------------	-----------------------



ELEV 2349	TDZE 2348
-----------	-----------



CATEGORY	A	B	C	D
LPV DA	2723-1	375 (400-1)		NA
LNAV/VNAV DA	2760-1½	412 (500-1½)		NA
LNAV MDA	2880-1	532 (600-1)		NA
CIRCLING	2920-1	571 (600-1)		NA

NC-2, 11 JUN 2026 to 09 JUL 2026

NC-2, 11 JUN 2026 to 09 JUL 2026