

WAAS CH 72614 W05A	APP CRS 055°	Rwy Ldg 5080 TDZE 360 Apt Elev 361
--	------------------------	---

RNAV (GPS) RWY 5

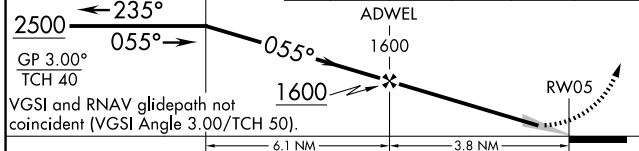
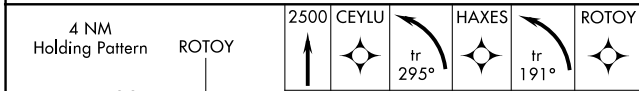
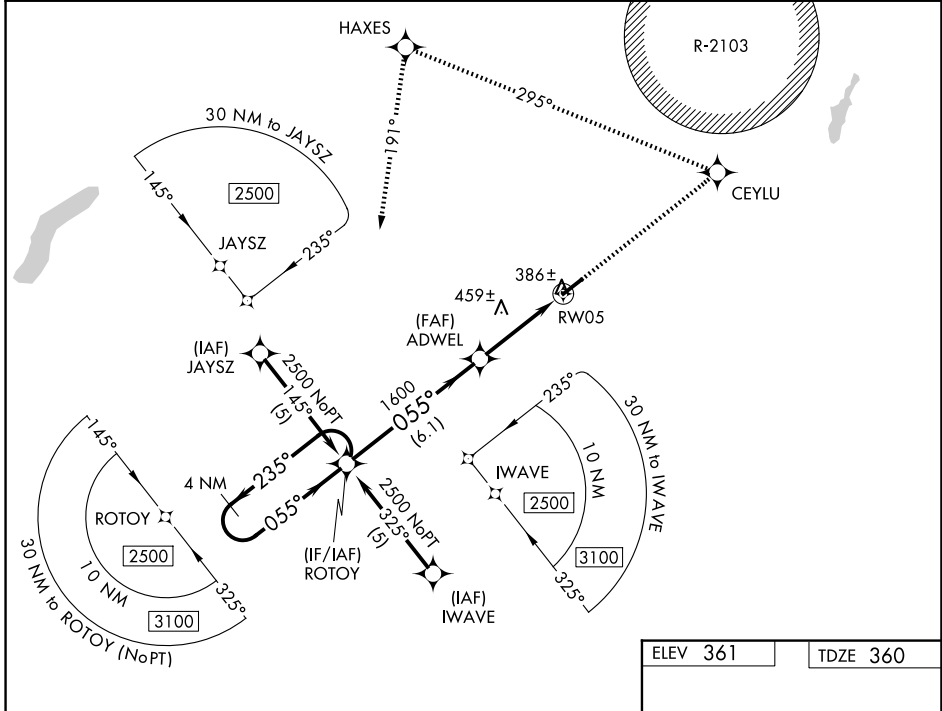
ENTERPRISE MUNI (EDN)

RNP APCH - GPS.

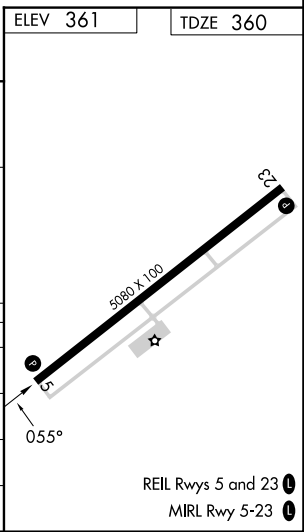
Baro-VNAV NA when using OZR altimeter setting. For uncompensated Baro-VNAV systems, LNAV/VNAV NA below -15°C or above 54°C. When local altimeter setting not received, use OZR altimeter setting. Circling Rwy 23 NA at night.

MISSED APPROACH: Climb to 2500 direct CEYLU and left turn via track 295° to HAXES and left turn via track 191° to ROTOY and hold.

AWOS-3PT 118.9	CAIRNS APP CON* 133.45 239.275	UNICOM 122.8(CTAF) 0
--------------------------	--	--------------------------------



CATEGORY	A	B	C	D
LPV DA	642-1 282 (300-1)			NA
LNAV/VNAV DA	688-1¼ 328 (400-1¼)			NA
LNAV MDA	760-1 400 (400-1)			NA
CIRCLING	920-1 559 (600-1)		1100-2 739 (800-2)	NA



SE-4, 11 JUN 2026 to 09 JUL 2026

SE-4, 11 JUN 2026 to 09 JUL 2026