

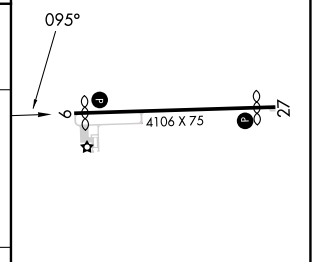
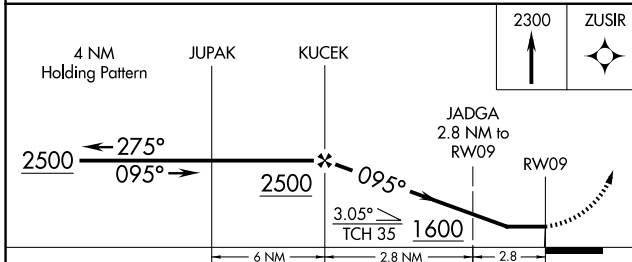
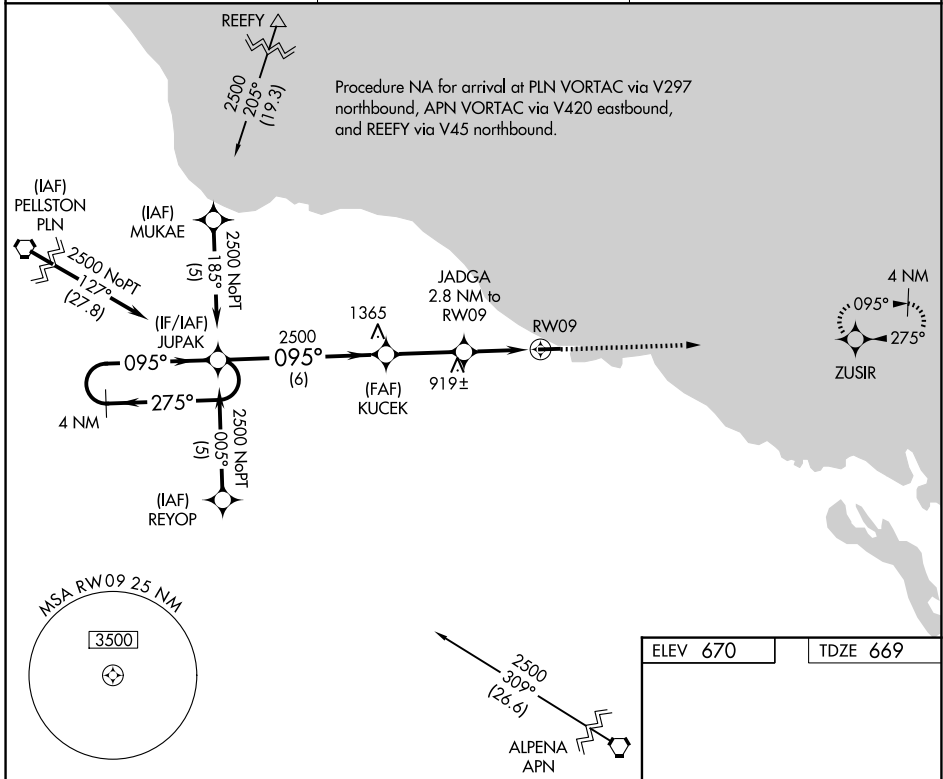
APP CRS	Rwy Ldg	3886
095°	TDZE	669
	Apt Elev	670

RNAV (GPS) RWY 9

PRESQUE ISLE COUNTY (PZQ)

RNP APCH.	If local altimeter setting not received, use Alpena County Rgnl altimeter setting and increase all MDAs 60 feet. Straight-in/Circling Rwy 9 NA at night. Rwy 9 helicopter visibility reduction below 1 SM NA.	MISSED APPROACH: Climb to 2300 direct ZUSIR and hold.
▼ NA ▲ NA		

AWOS-3P 118.125	ALPENA APP CON * 128.425 379.3	CTAF 122.9
---------------------------	--	----------------------



CATEGORY	A	B	C	D
RNAV MDA	1120-1	451 (500-1)	1120-1¼ 451 (500-1¼)	NA
CIRCLING	1200-1 530 (600-1)	1240-1 570 (600-1)	1260-1½ 590 (600-1½)	NA

REIL Rwy 9 and 27
 MRL Rwy 9-27

EC-1, 11 JUN 2026 to 09 JUL 2026

EC-1, 11 JUN 2026 to 09 JUL 2026