

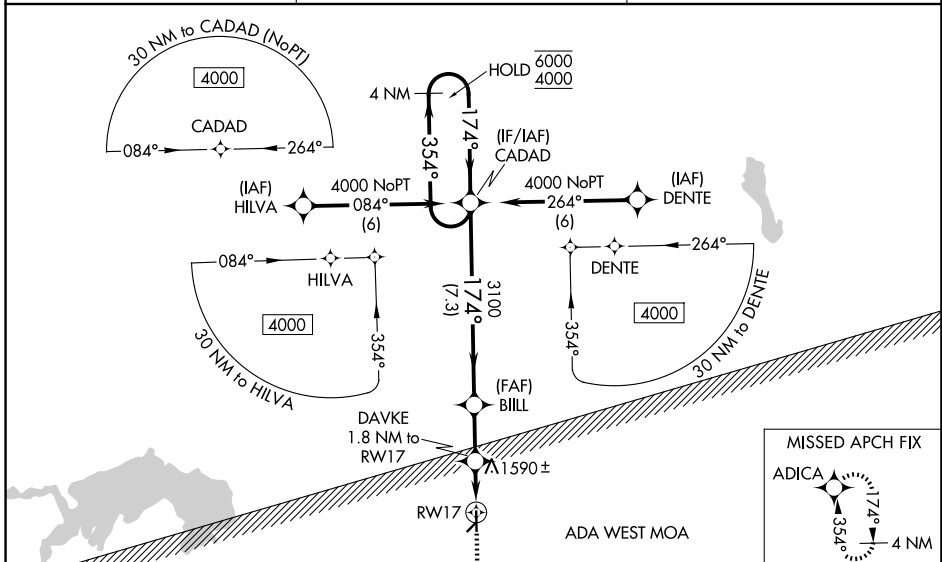
WAAS CH 42847 W17A	APP CRS 174°	Rwy Ldg 4018 TDZE 1418 Apt Elev 1418
--	------------------------	---

RNAV (GPS) RWY 17

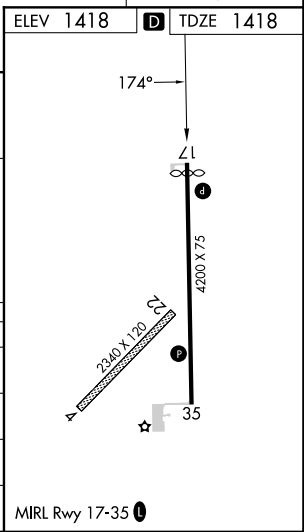
MORITZ MEML (K61)

RNP APCH - GPS.		MISSED APPROACH: Climb to 4000 direct ADICA and hold.
▽ ▲ NA	Rwy 17 helicopter visibility reduction below ¼ SM NA. For uncompensated Baro-VNAV systems, LNAV/VNAV NA below -17°C or above 54°C. Baro-VNAV and VDP NA when using CNK altimeter setting. Circling NA to Rwys 4 and 22. When local altimeter setting not received, use CNK altimeter setting and increase LPV DA to 1737 feet. Increase LNAV/VNAV DA to 1898 feet and all visibilities ½ SM. Increase all MDAs 60 feet.	

AWOS-3PT 118.225	KANSAS CITY CENTER 134.9 363.2	UNICOM 122.8 (CTAF)
----------------------------	--	-------------------------------



4 NM Holding Pattern		CADAD	BILL	DAVKE 1.8 NM to RWY17	ADICA
6000	4000	3100	3100	2240	4000
GP 4.00°	TCH 40	7.3 NM	2 NM	0.9 NM	0.9 NM
CATEGORY	A	B	C	D	
LPV DA	1679-1	261 (300-1)		NA	
LNAV/VNAV DA	1840-1¼	422 (500-1¼)		NA	
LNAV MDA	1840-1	422 (500-1)		NA	
CIRCLING	1900-1 482 (500-1)	2260-1¼ 842 (900-1¼)		NA	



NC-2, 11 JUN 2026 to 09 JUL 2026

NC-2, 11 JUN 2026 to 09 JUL 2026