

WAVERLY, IOWA

AL-6558 (FAA)

25275

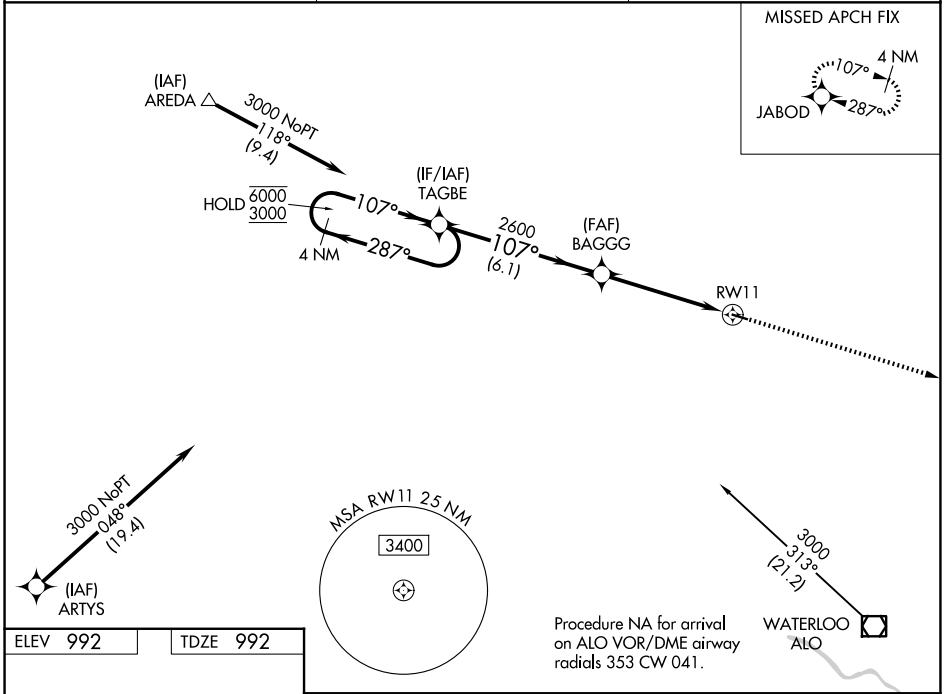
| | | |
|--|------------------------|---|
| WAAS CH 58243 W11A | APP CRS 107° | Rwy Ldg 3200 TDZE 992 Apt Elev 992 |
|--|------------------------|---|

RNAV (GPS) RWY 11

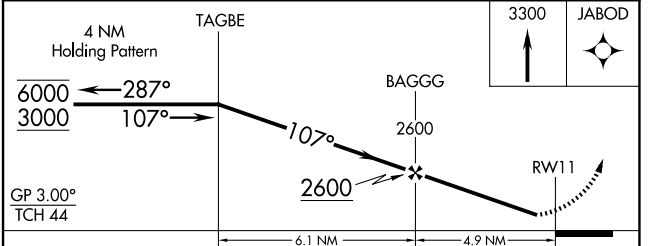
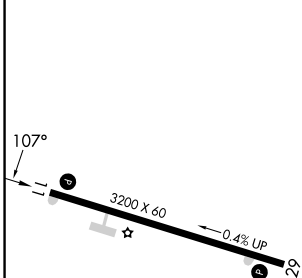
WAVERLY MUNI (C25)

| | |
|-----------|---|
| RNP APCH. | MISSED APPROACH: Climb to 3300 direct JABOD and hold. |
| | Rwy 11 helicopter visibility reduction below 1 SM NA. Baro-VNAV NA. Use Waterloo altimeter setting. Straight-in and Circling Rwy 11 NA at night. |

| | | |
|---------------------------|---|-------------------------------|
| ALO ASOS 120.65 | DES MOINES APP CON * 118.9 251.15 | UNICOM 122.8 (CTAF) |
|---------------------------|---|-------------------------------|



| | |
|----------|----------|
| ELEV 992 | TDZE 992 |
|----------|----------|



| CATEGORY | A | B | C | D |
|--------------|-----------------------|-----------------------|-------------------------|----|
| LPV DA | 1287-1 295 (300-1) | | | NA |
| LNAV/VNAV DA | 1334-1 342 (400-1) | | | NA |
| LNAV MDA | 1540-1 | 548 (600-1) | 1540-1½ 548 (600-1½) | NA |
| CIRCLING | 1540-1 548 (600-1) | 1620-1 628 (700-1) | 1620-1¾ 628 (700-1¾) | NA |

REIL Rwy 11 and 29
MIRL Rwy 11-29

WAVERLY, IOWA
Orig 31DEC20

42°45'N-92°30'W

RNAV (GPS) RWY 11

WAVERLY MUNI (C25)

NC-3, 11 JUN 2026 to 09 JUL 2026

NC-3, 11 JUN 2026 to 09 JUL 2026