

WAAS CH <b>70333</b> <b>W15A</b>	APP CRS <b>158°</b>	Rwy ldg TDZE Apt Elev	<b>4500</b> <b>1391</b> <b>1394</b>
--	------------------------	-----------------------------	---

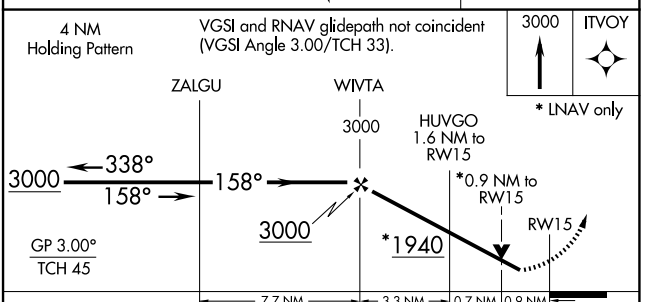
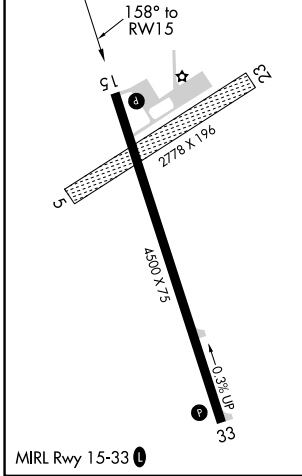
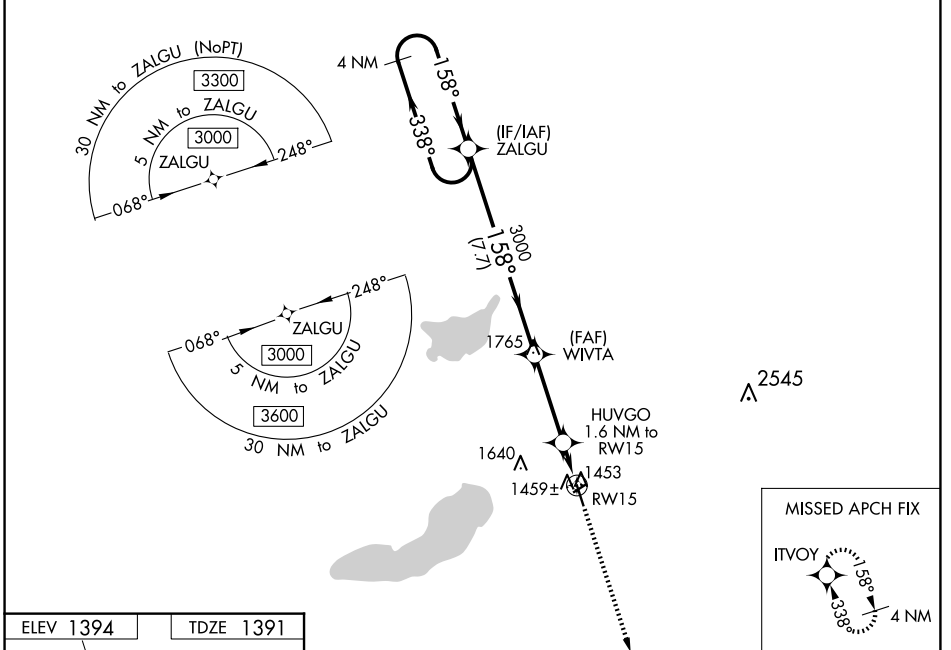
# RNAV (GPS) RWY 15

GLENWOOD MUNI (GHW)

**⚠** For uncorrected Baro-VNAV systems, LNAV/VNAV NA below -17°C (-2°F) or above 54°C (130°F). DME/DME RNP-0.3 NA. Helicopter visibility reduction below 1 SM NA. When local altimeter setting not received, use Alexandria altimeter setting and increase DA 36 feet and all MDA 40 feet. Baro-VNAV and VDP NA when using Alexandria altimeter setting. Circling NA to Rwy's 5/23.

**MISSED APPROACH:**  
Climb to 3000 direct ITVOY and hold.

AWOS-3 <b>118.925</b>	MINNEAPOLIS CENTER <b>126.1 269.2</b>	GCO <b>121.725</b>	CTAF <b>122.9</b> <b>0</b>
--------------------------	--	-----------------------	-------------------------------



CATEGORY	A	B	C	D
LPV DA	1641-1	250 (300-1)		NA
LNAV/ DA VNAV	1641-1	250 (300-1)		NA
LNAV MDA	1720-1	329 (400-1)		NA
CIRCLING	1840-1 446 (500-1)	1860-1 466 (500-1)	1940-1½ 546 (600-1½)	NA

NC-1, 11 JUN 2026 to 09 JUL 2026

NC-1, 11 JUN 2026 to 09 JUL 2026