

WAAS CH <b>77622</b> <b>W15A</b>	APP CRS <b>148°</b>	Rwy Ldg TDZE Apt Elev	<b>4000</b> <b>1061</b> <b>1062</b>
--	------------------------	-----------------------------	---

# RNAV (GPS) RWY 15

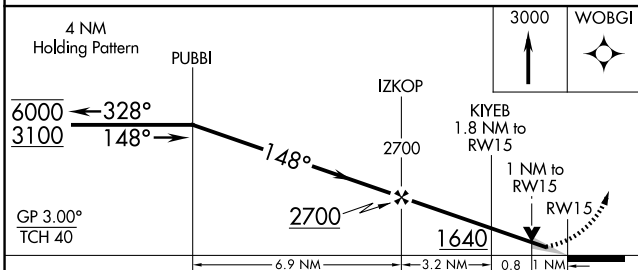
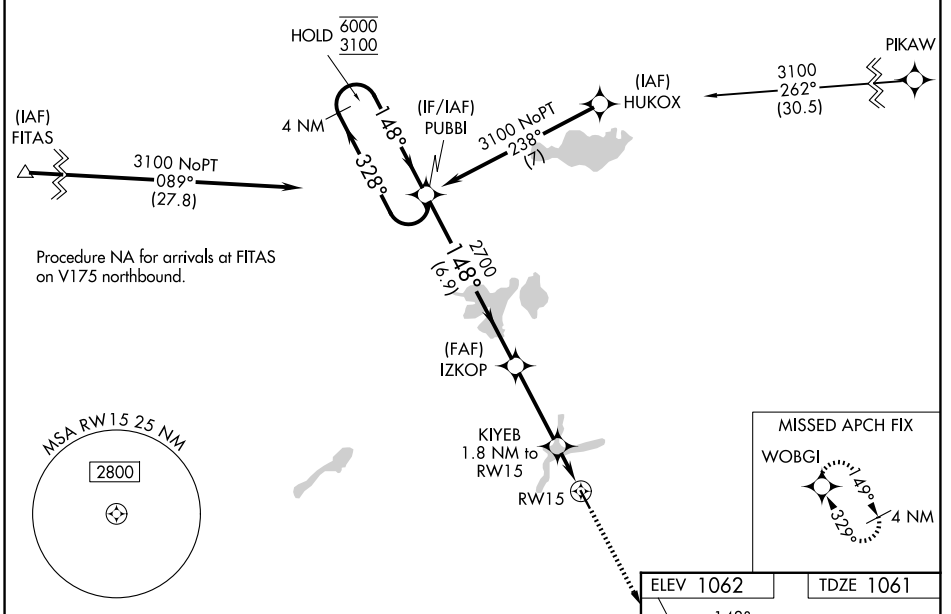
HUTCHINSON MUNI/BUTLER FLD (HCD)

**RNP APCH - GPS.**

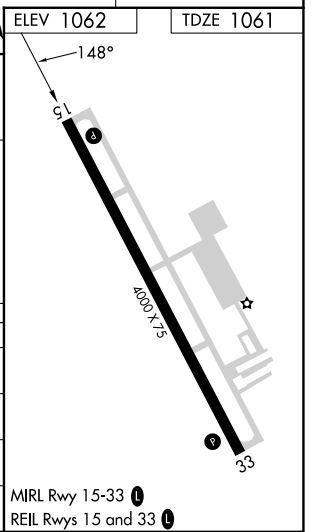
**⚠** For uncompensated Baro-VNAV systems, LNAV/VNAV NA below -17°C or above 54°C. Baro-VNAV and VDP NA when using GYL altimeter setting. When local altimeter setting not received, use GYL altimeter setting and increase LPV DA to 1353 feet and all visibilities 1/8 SM; increase LNAV/VNAV DA to 1370 feet; increase all MDAs 60 feet and LNAV visibility Cat C 1/8 SM.

**MISSED APPROACH:** Climb to 3000 direct WOBGI and hold.

AWOS-3 <b>118.525</b>	MINNEAPOLIS CENTER <b>127.1 290.2</b>	GCO <b>121.725</b>	UNICOM <b>122.8 (CTAF) 0</b>
--------------------------	--	-----------------------	---------------------------------



CATEGORY	A	B	C	D
LPV DA	1311-3/4	250 (300-3/4)		NA
LNAV/VNAV DA	1328-7/8	267 (300-7/8)		NA
LNAV MDA	1420-1	359 (400-1)		NA
CIRCLING	1580-1 518 (600-1)	1600-1 538 (600-1)	1740-2 678 (700-2)	NA



NC-1, 11 JUN 2026 to 09 JUL 2026

NC-1, 11 JUN 2026 to 09 JUL 2026