

LOC I-HNZ 109.75	APP CRS 060°	Rwy Ldg TDZE Apt Elev	5501 526 526
----------------------------	------------------------	-----------------------------	---

LOC RWY 6

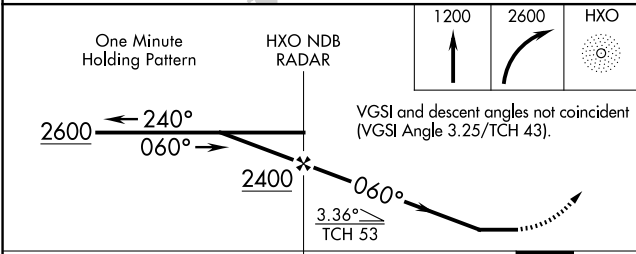
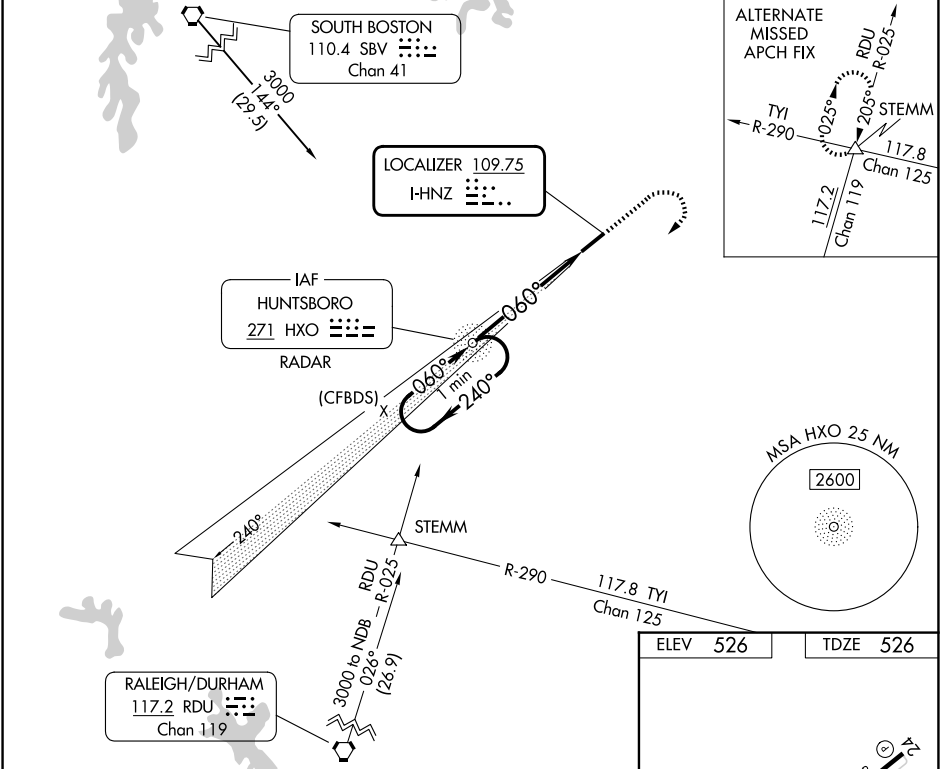
HENDERSON/OXFORD (HNZ)

ADF or RADAR required. ADF or RADAR required for procedure entry.

▼ Rwy 6 helicopter visibility reduction below ¼ SM NA. When local altimeter setting not received, use Roxboro altimeter setting and increase all MDA 80 feet; increase S-6 Cat C/D visibility ½ SM and Circling Cat C and D visibility ¼ SM.

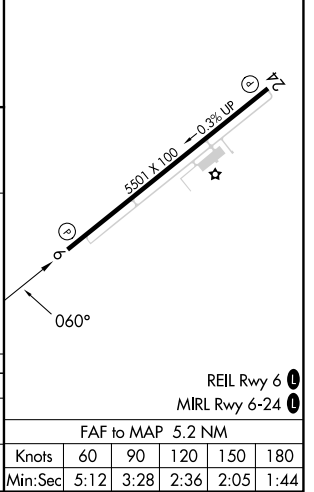
MISSED APPROACH: Climb to 1200 then climbing right turn to 2600 direct HXO NDB/RADAR and hold.

AWOS-3 118.625	RALEIGH APP CON 132.35 256.9	UNICOM 122.8(CTAF) 0
--------------------------	--	--------------------------------



ELEV 526	TDZE 526
----------	----------

CATEGORY	A	B	C	D
S-6	980-1	454 (500-1)	980-1 3/8	454 (500-1 3/8)
CIRCLING	980-1	454 (500-1)	1100-1 1/2	1280-2 1/2
			574 (600-1 1/2)	754 (800-2 1/2)



SE-2, 11 JUN 2026 to 09 JUL 2026

SE-2, 11 JUN 2026 to 09 JUL 2026

FAF to MAP 5.2 NM					
Knots	60	90	120	150	180
Min:Sec	5:12	3:28	2:36	2:05	1:44