

WAAS CH <b>78047</b> <b>W17A</b>	APP CRS <b>173°</b>	Rwy Ldg <b>4001</b> TDZE <b>1551</b> Apt Elev <b>1551</b>
--	------------------------	---

# RNAV (GPS) RWY 17

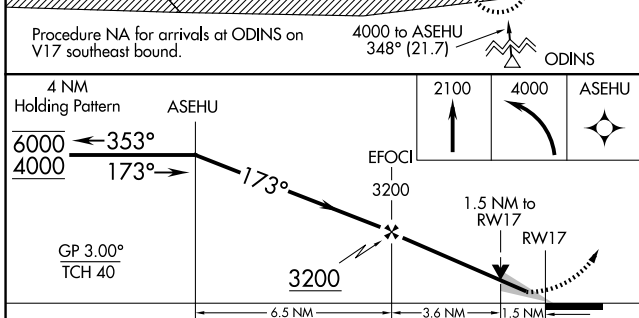
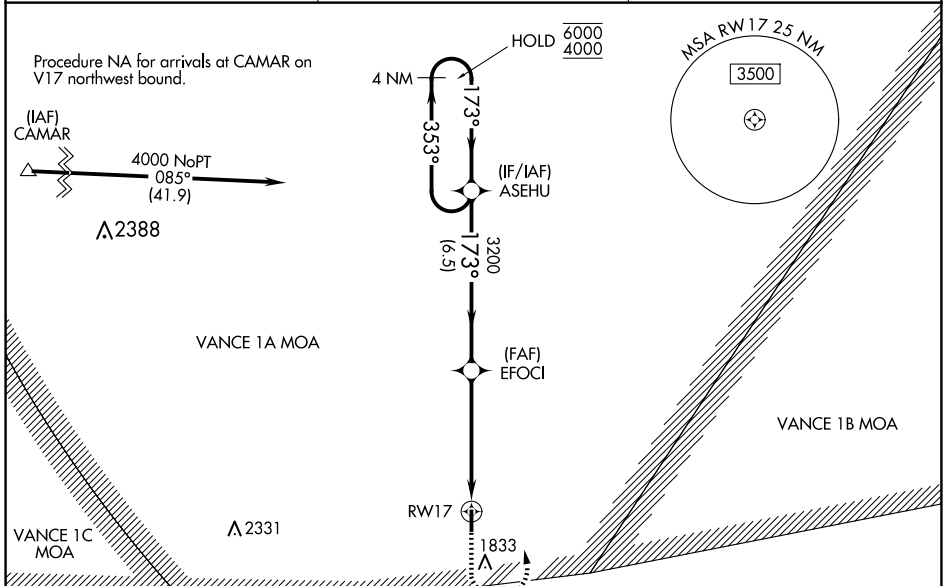
WATONGA RGNL (JWG)

RNP APCH - GPS.

**⚠** For uncompensated Baro-VNAV systems, LNAV/VNAV NA below -18°C or above 54°C. Baro-VNAV and VDP NA when using CLK altimeter setting. When local altimeter setting not received, use CLK altimeter setting and increase LPV DA to 1887 feet and all visibilities 1/4 SM; increase LNAV/VNAV DA to 2086 feet and all visibilities 1/4 SM; increase all MDAs 100 feet and LNAV visibility Cat C 3/8 SM and Circling visibility Cat C 1/2 SM.

**MISSED APPROACH:** Climb to 2100 then climbing left turn to 4000 direct ASEHU and hold.

AWOS-3 <b>134.175</b>	VANCE APP CON ★ <b>126.75 346.325</b>	UNICOM <b>122.8 (CTAF)</b>
--------------------------	--	-------------------------------



ELEV 1551	TDZE 1551
-----------	-----------

173°

Z1

4001 X 40

0.5% UP

35

☆

MIRL Rwy 17-35

CATEGORY	A	B	C	D
LPV DA	1801-3/4	250 (300-3/4)		NA
LNAV/VNAV DA	2000-13/8	449 (500-13/8)		NA
LNAV MDA	2020-1	469 (500-1)	2020-13/8 469 (500-13/8)	NA
CIRCLING	2040-1 489 (500-1)	2140-1 589 (600-1)	2140-11/2 589 (600-11/2)	NA

SC-1, 11 JUN 2026 to 09 JUL 2026

SC-1, 11 JUN 2026 to 09 JUL 2026