

WAAS CH 86934 W03A	APP CRS 037°	Rwy Idg TDZE 1370 Apt Elev 1372	5007
--	------------------------	---	-------------

RNAV (GPS) RWY 3

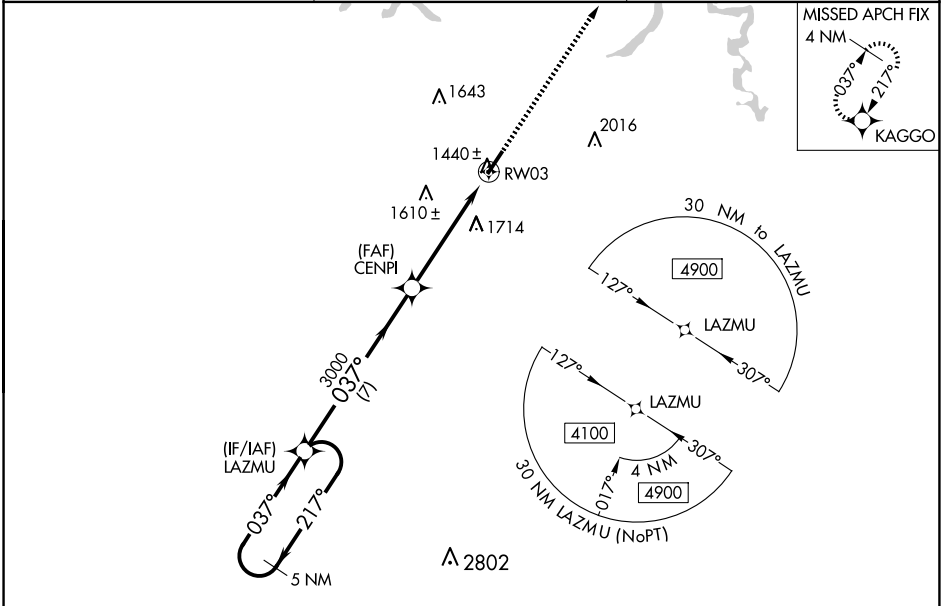
LIVINGSTON MUNI (8A.3)

RNP APCH - GPS.

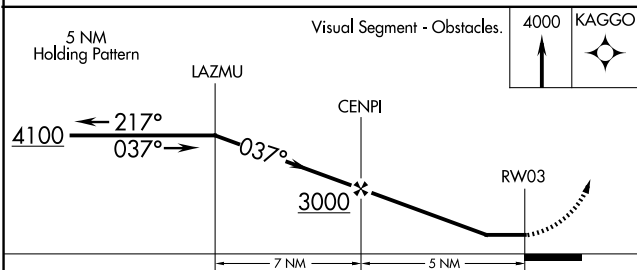
⚠ When local altimeter setting not received, use Crossville altimeter setting and increase all MDA 140 feet, and increase LP Cat C and D and LNAV Cat C and D visibility $\frac{3}{8}$ mile, Circling Cat B visibility $\frac{1}{4}$ mile and Circling Cat C and D visibilities $\frac{1}{2}$ mile. Straight-in minimums NA at night, Circling Rwy 3 NA at night. Rwy 3 helicopter visibility reduction below 1 SM NA.

MISSED APPROACH:
Climb to 4000 direct KAGGO and hold.

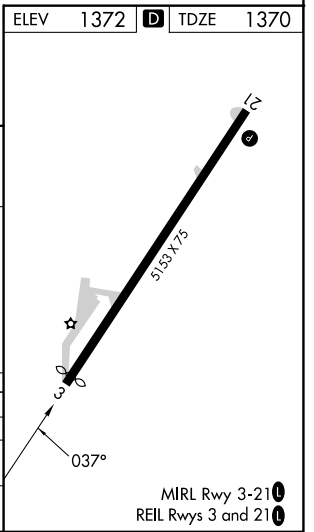
AWOS-3 126.175	INDIANAPOLIS CENTER 124.625 371.925	UNICOM 122.8 (CTAF)
--------------------------	---	-------------------------------



ELEV	1372	TDZE	1370
------	------	------	------



CATEGORY	A	B	C	D
LP MDA		1720-1	350 (400-1)	
LNAV MDA	1840-1	470 (500-1)	1840-1 $\frac{3}{8}$	470 (500-1 $\frac{3}{8}$)
CIRCLING	1880-1 508 (600-1)	2080-1 708 (800-1)	2080-2 708 (800-2)	2360-3 988 (1000-3)



SE-1, 11 JUN 2026 to 09 JUL 2026

SE-1, 11 JUN 2026 to 09 JUL 2026