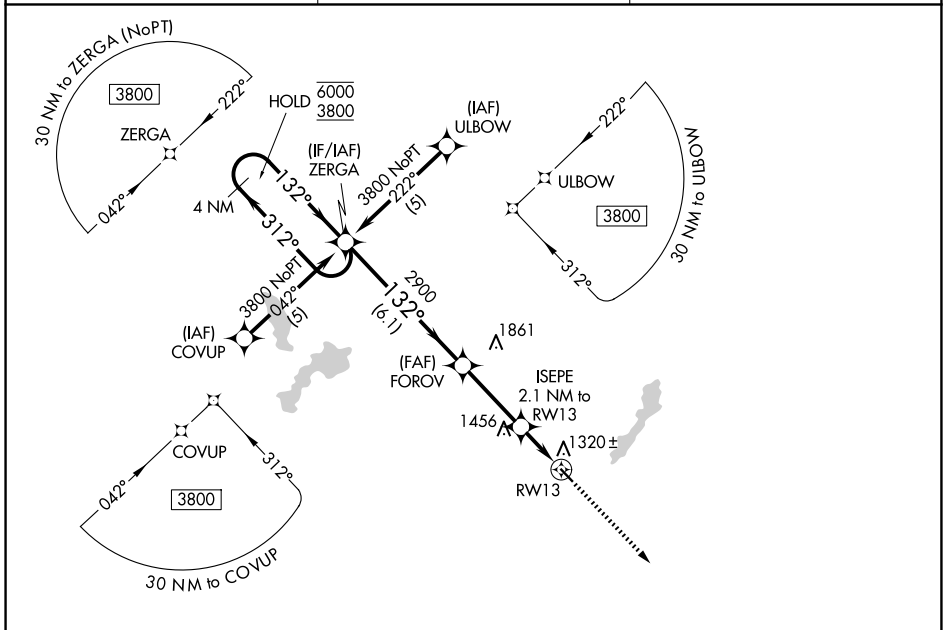


APP CRS	Rwy Ldg	<b>3401</b>
<b>132°</b>	TDZE	<b>1206</b>
	Apt Elev	<b>1206</b>

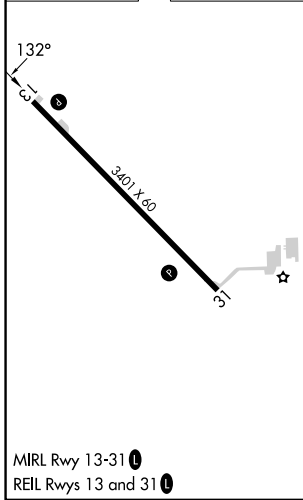
# RNAV (GPS) RWY 13

EMMETSBURG MUNI (E.G.Q)

RNP APCH - GPS.		MISSED APPROACH: Climb to 3800 direct HIVEN and hold.
▼ Rwy 13 helicopter visibility reduction below 1 SM NA. Procedure NA at night. ▲ NA Use AXA altimeter setting, when not received, use EST altimeter setting, and increase all MDAs 20 feet.		
AXA AWOS-3 <b>118.475</b>	MINNEAPOLIS CENTER <b>127.75 257.7</b>	UNICOM <b>122.8 (CTAF) 0</b>



ELEV 1206	TDZE 1206
-----------	-----------



VGSi and descent angles not coincident (VGSi Angle 4.00/TCH 54).		3800	HIVEN
4 NM Holding Pattern		↑	✧
ZERGA		FOROV	
ISEPE 2.1 NM to RWY13		RWY13	
6000 ← 312°		2900	
3800 → 132°		1900	
		3.04° TCH 40	
		6.1 NM	
		3 NM	
		2.1 NM	
CATEGORY	A	B	C
LNVA MDA	1620-1	414 (500-1)	NA
CIRCLING	1780-1	1840-1	NA
	574 (600-1)	634 (700-1)	

MIRL Rwy 13-31 0  
REIL Rws 13 and 31 0

43°06'N-94°42'W

# EMMETSBURG MUNI (E.G.Q) RNAV (GPS) RWY 13

NC-3, 11 JUN 2026 to 09 JUL 2026

NC-3, 11 JUN 2026 to 09 JUL 2026