

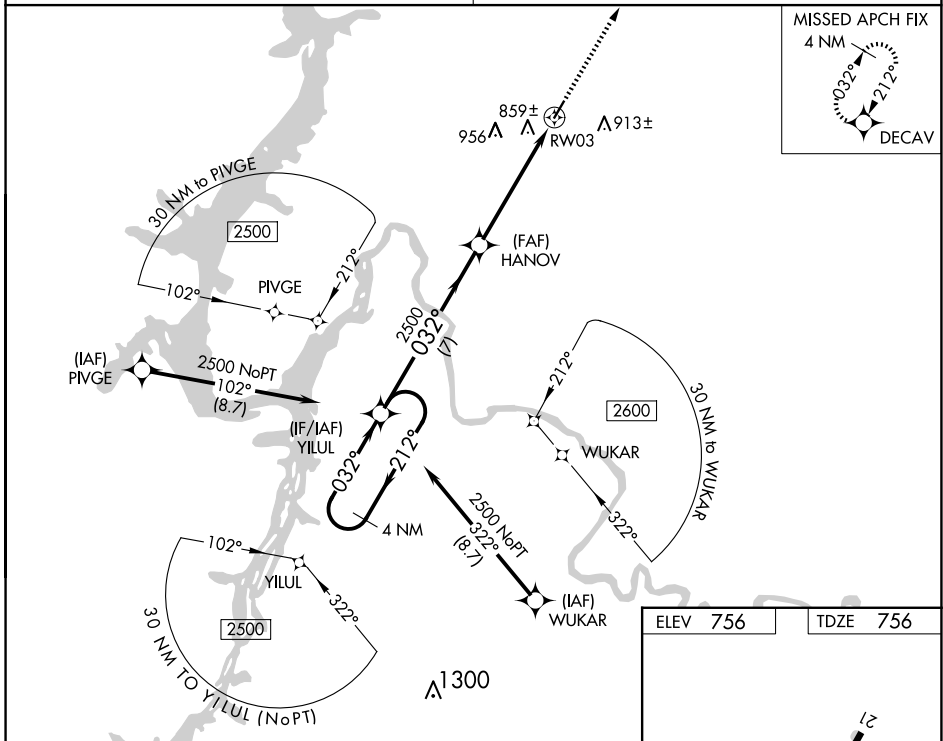
WAAS CH 90222 W03A	APP CRS 032°	Rwy Idg TDZE Apt Elev	4000 756 756
--	------------------------	-----------------------------	---

RNAV (GPS) RWY 3

HUMPHREYS COUNTY (ØM5)

RNP APCH.	MISSED APPROACH: Climb to 2700 direct DECAV and hold.
<p>▼ When local altimeter setting not received, use Nashville Intl altimeter setting and increase all MDA 160 feet; increase LP Cat C and D visibility 3/8 mile, LNAV Cat C and D visibility 1/2 mile. Procedure NA at night. Rwy 3 helicopter visibility reduction below 1 SM NA.</p>	

MEMPHIS CENTER 125.85 379.25	UNICOM 122.8 (CTAF) 0
--	---------------------------------



SE-1, 11 JUN 2026 to 09 JUL 2026

SE-1, 11 JUN 2026 to 09 JUL 2026

Visual Segment - Obstacles.		2700	DECAV
4 NM Holding Pattern		↑	✧
2500 ← 212°	032° →	2500	
7 NM		5.3 NM	
CATEGORY	A	B	C
LP MDA		1100-1	344 (400-1)
LNAV MDA		1120-1	364 (400-1)

