

COPTER RNAV (GPS) X RWY 31

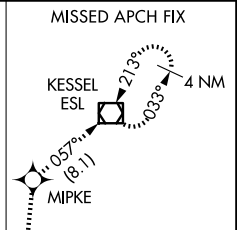
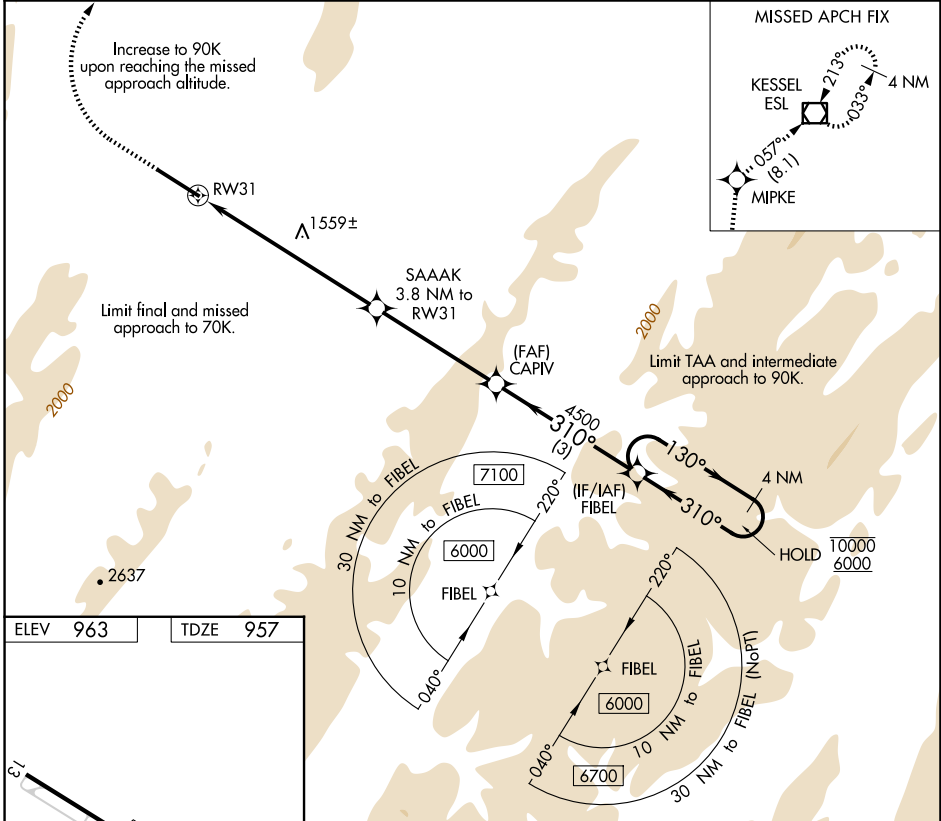
GRANT COUNTY (W99)

APP CRS	Rwy Ldg	5000
310°	TDZE	957
	Apt Elev	963

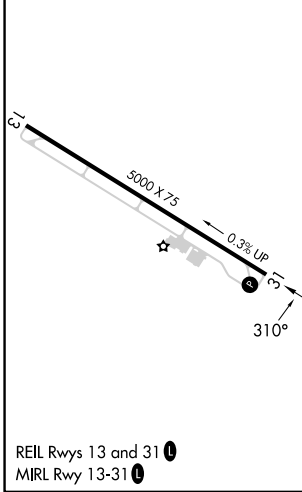
RNP APCH.	
NA	When local altimeter setting not received, procedure NA.
-7°C	

MISSED APPROACH: Climb to 1380 then climbing right turn to 5000 direct MIPKE and on track 057° to ESL VOR/DME and hold.

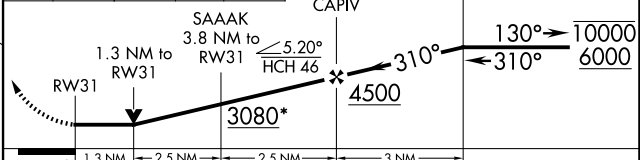
AWOS-3 124.475	WASHINGTON CENTER 133.55 322.55	UNICOM 122.8 (CTAF)
--------------------------	---	-------------------------------



ELEV 963	TDZE 957
----------	----------



1380	5000	MIPKE	tr 057°	ESL	VGSI and descent angles not coincident (VGSI Angle 6.50/TCH 46).
					FIBEL Holding Pattern 4 NM



CATEGORY	COPTER	
LNAV MDA	1880- ³ / ₄ 923 (1000- ³ / ₄)	

COPTER RNAV (GPS) X RWY 31

NE-4, 11 JUN 2026 to 09 JUL 2026

NE-4, 11 JUN 2026 to 09 JUL 2026