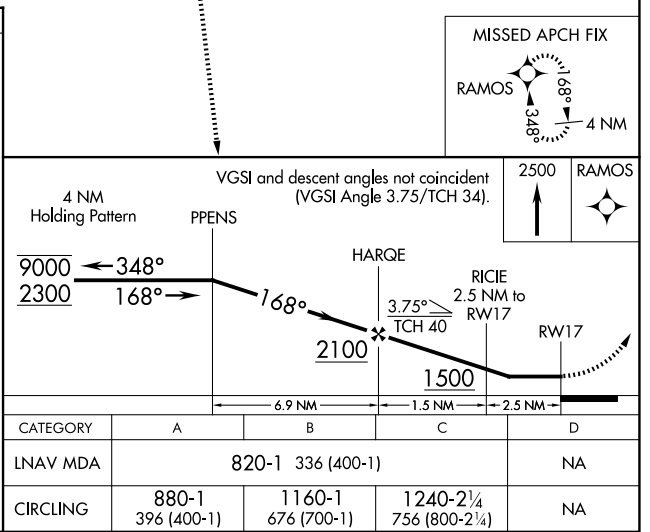
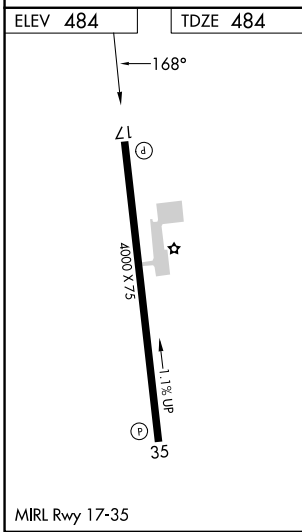
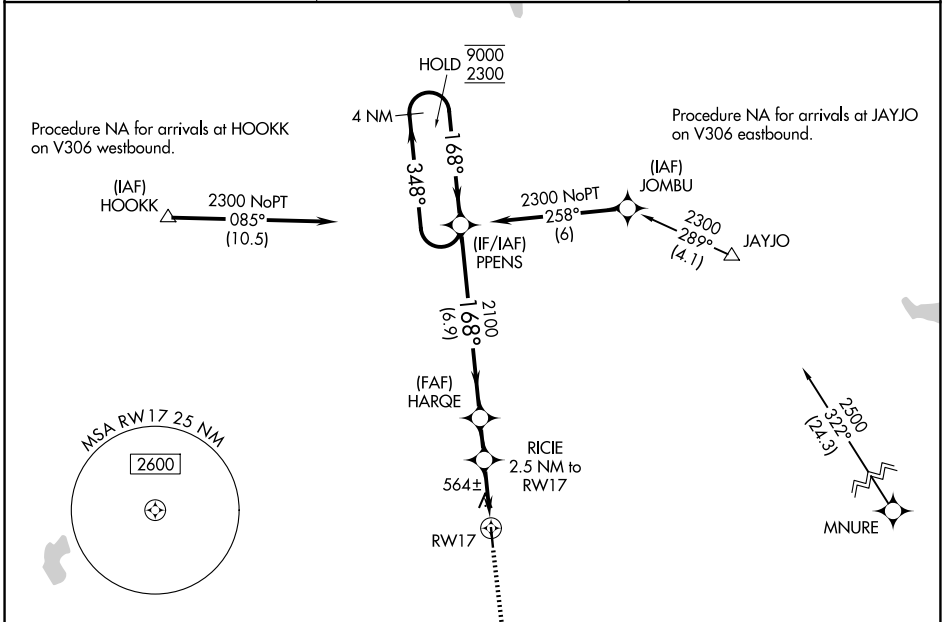


APP CRS	Rwy Ldg	4000
168°	TDZE	484
	Apt Elev	484

RNAV (GPS) RWY 17

GIDDINGS-LEE COUNTY (GYB)

RNP APCH - GPS.		MISSED APPROACH: Climb to 2500 direct RAMOS and hold.
<p>▼ Procedure NA at night. Rwy 17 helicopter visibility reduction below 1 SM NA. When local altimeter setting not received, use AUS altimeter setting and increase all MDAs 100 feet and LNAV visibility Cat C ¼ SM, and Circling visibility Cat C ¼ SM.</p> <p>▲</p>		
AWOS-3 119.225	AUSTIN APP CON 127.225 317.65	UNICOM 123.05 (CTAF)



SC-5, 11 JUN 2026 to 09 JUL 2026

SC-5, 11 JUN 2026 to 09 JUL 2026