

LOC/DME I-RKH	APP CRS	Rwy Ldg	<b>5007</b>
<b>109.95</b>	<b>040°</b>	TDZE	<b>66</b>
Chan <b>36(Y)</b>		Apt Elev	<b>70</b>

# LOC RWY 4

SUFFOLK EXEC (SF'Q)

RADAR required for procedure entry at OLUCE INT.

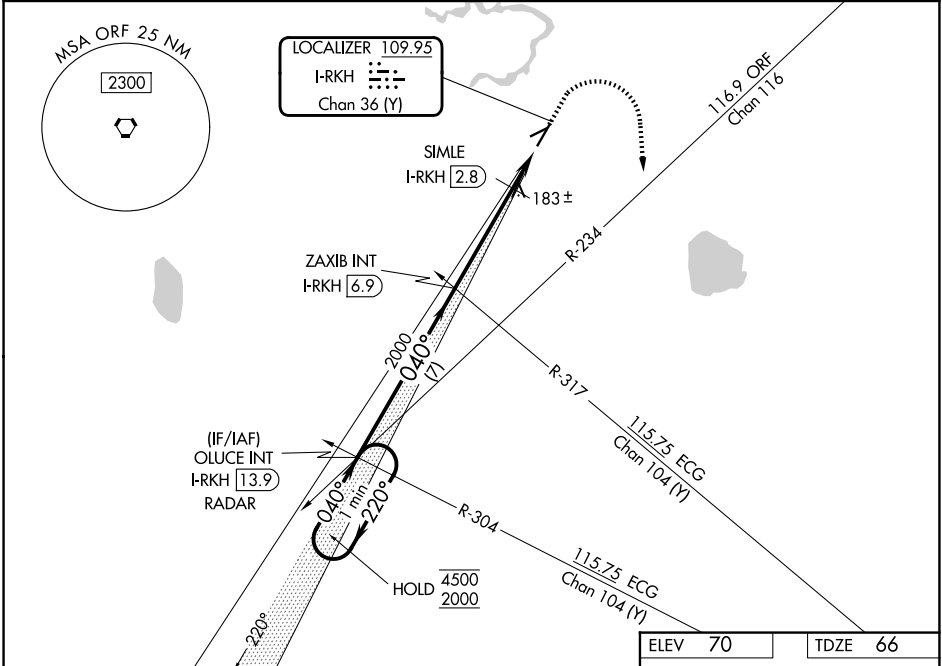
**NA** Rwy 4 helicopter visibility reduction below 3/4 SM NA.

MISSED APPROACH: Climb to 600 then climbing right turn to 2000 on ORF VORTAC R-234 to OLUCE INT/I-RKH 13.9 DME/RADAR and hold.

AWOS-3  
**119.375**

NORFOLK APP CON  
**127.9 269.425**

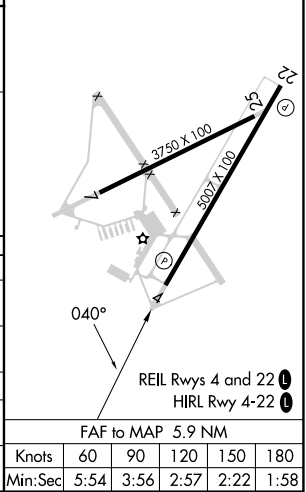
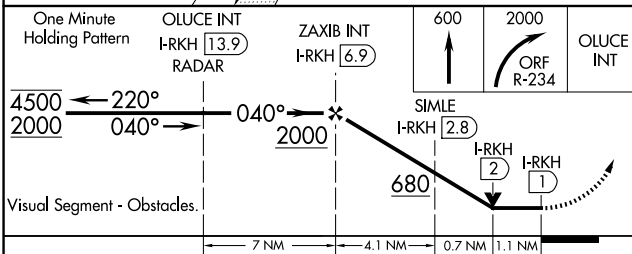
UNICOM  
**122.7 (CTAF) 0**



NE-3, 11 JUN 2026 to 09 JUL 2026

NE-3, 11 JUN 2026 to 09 JUL 2026

ELEV	<b>70</b>	TDZE	<b>66</b>
------	-----------	------	-----------



CATEGORY	A	B	C	D
S-LOC 4	680-1	614 (700-1)	680-1 3/4	614 (700-1 3/4)
CIRCLING	680-1	610 (700-1)	680-1 3/4 610 (700-1 3/4)	680-2 610 (700-2)
SIMLE FIX MINIMUMS (DME REQUIRED)				
S-LOC 4	440-1 374 (400-1)			
CIRCLING	500-1 430 (500-1)	560-1 490 (500-1)	680-1 3/4 610 (700-1 3/4)	680-2 610 (700-2)

FAF to MAP 5.9 NM					
Knots	60	90	120	150	180
Min:Sec	5:54	3:56	2:57	2:22	1:58