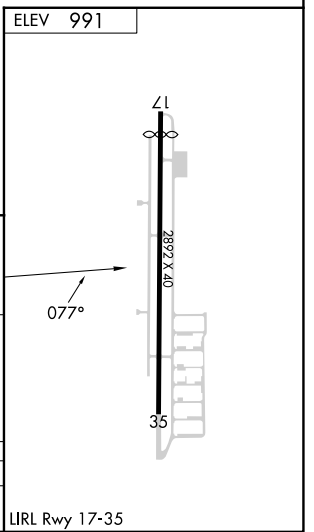
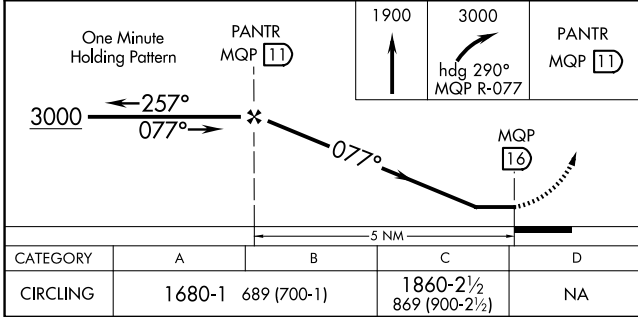
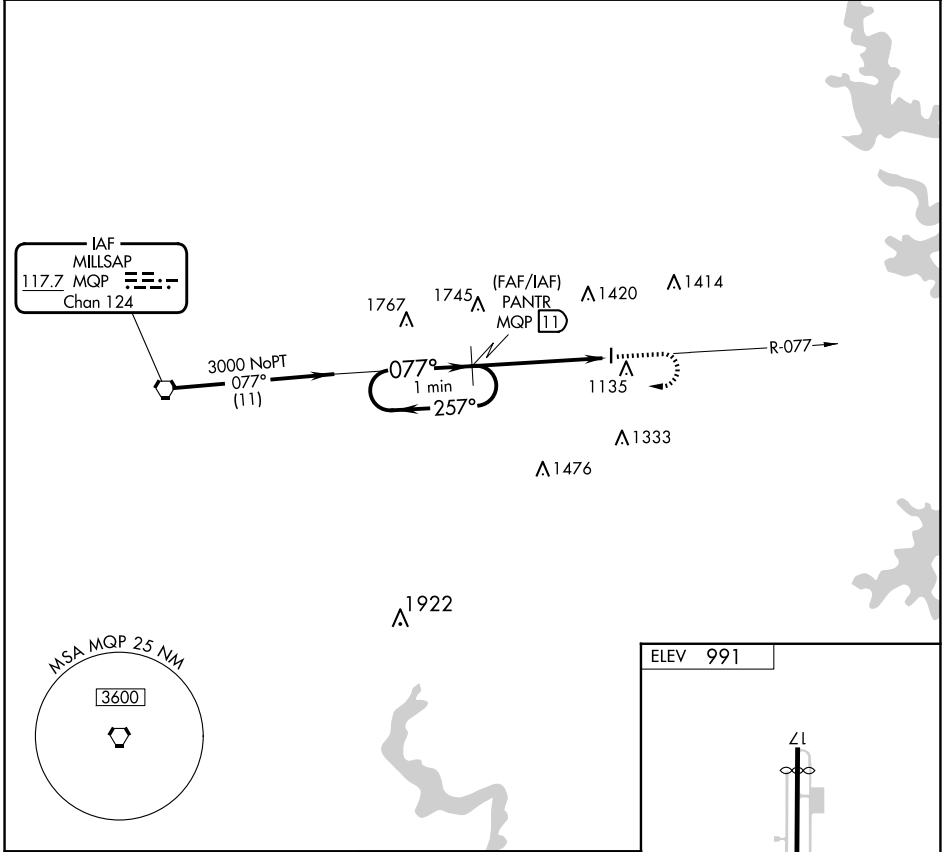


VORTAC MQP <b>117.7</b> Chan <b>124</b>	APP CRS <b>077°</b>	Rwy Idg TDZE Apt Elev	<b>N/A</b> <b>N/A</b> <b>991</b>
---	------------------------	-----------------------------	--

**VOR/DME-A**  
PARKER COUNTY (WEA)

<b>NA</b> Use Fort Worth Meacham altimeter setting.	MISSED APPROACH: Climb to 1900 then climbing right turn to 3000 via heading 290° and MQP R-077 to PANTR and hold.
LONE STAR APP CON <b>135.975 379.9</b>	UNICOM <b>122.7 (CTAF)</b>



SC-2, 11 JUN 2026 to 09 JUL 2026

SC-2, 11 JUN 2026 to 09 JUL 2026