

APP CRS	Rwy Ldg	N/A
059°	TDZE	N/A
	Apt Elev	669

RNAV (GPS)-B

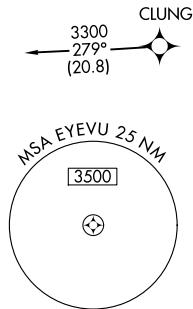
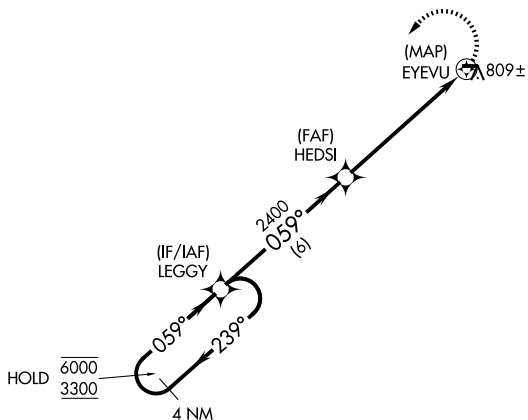
PINE HILL (9G6)

RNP APCH - GPS

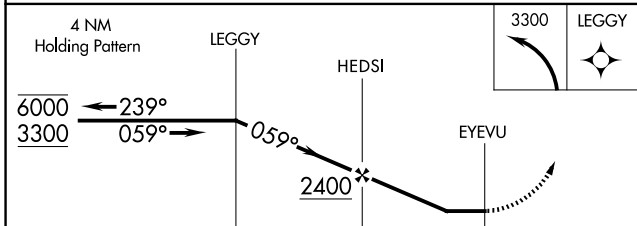
NA Rwy 10 and 28 helicopter visibility reduction below 1 SM NA. Use Buffalo Niagara Intl altimeter setting; when not received, use Niagara Falls Intl altimeter setting and increase all MDA 20 feet. Procedure NA at night.

MISSED APPROACH: Climbing left turn to 3300 direct LEGGY and hold.

BUF AWOS 135.35	BUFFALO APP CON 126.15 263.125	UNICOM 123.0 (CTAF)
---------------------------	--	-------------------------------



ELEV 669



CATEGORY	A	B	C	D
CIRCLING	1360-1	691 (700-1)	NA	

NE-2, 11 JUN 2026 to 09 JUL 2026

NE-2, 11 JUN 2026 to 09 JUL 2026