

WAAS CH <b>78215</b> <b>W13A</b>	APP CRS <b>134°</b>	Rwy Idg TDZE Apt Elev	<b>4012</b> <b>837</b> <b>841</b>
--	------------------------	-----------------------------	---

# RNAV (GPS) RWY 13

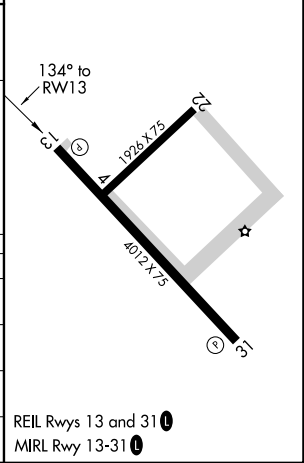
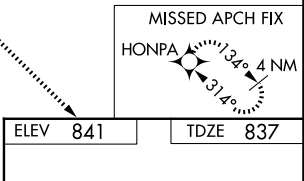
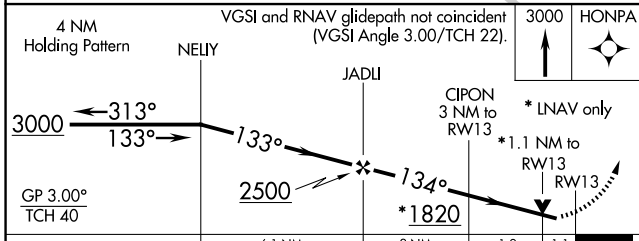
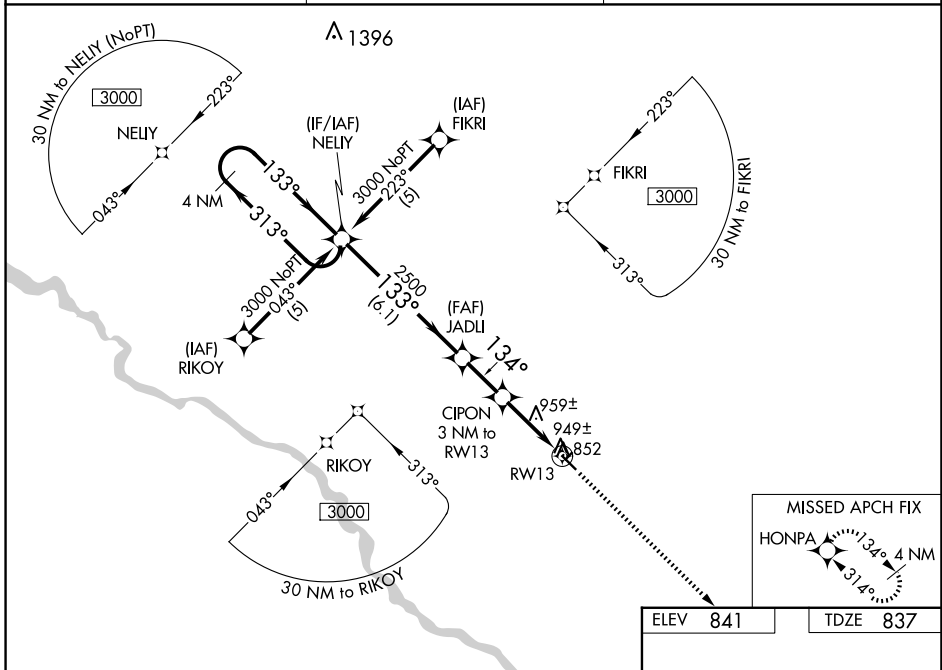
OSKALOOSA MUNI (00A)

RNP APCH.

When local altimeter setting not received, use Ottumwa altimeter setting and increase all DA 18 feet and all MDA 20 feet and increase LNAV/VNAV all Cats visibility ¼ mile. Baro-VNAV and VDP NA when using Ottumwa altimeter setting. For uncompensated Baro-VNAV systems, LNAV/VNAV NA below -1.6°C (4°F) or above 54°C (130°F).

MISSED APPROACH: Climb to 3000 direct HONPA and hold.

AWOS-3 <b>118.625</b>	CHICAGO CENTER <b>118.15 335.575</b>	UNICOM <b>122.8 (CTAF) 0</b>
--------------------------	---	---------------------------------



CATEGORY	A	B	C	D
LPV DA	1193-1¼	356 (400-1¼)		NA
LNAV/VNAV DA	1219-1¼	382 (400-1¼)		NA
LNAV MDA	1220-1	383 (400-1)		NA
CIRCLING	1260-1 419 (500-1)	1300-1 459 (500-1)	1300-1½ 459 (500-1½)	NA

NC-3, 11 JUN 2026 to 09 JUL 2026

NC-3, 11 JUN 2026 to 09 JUL 2026