

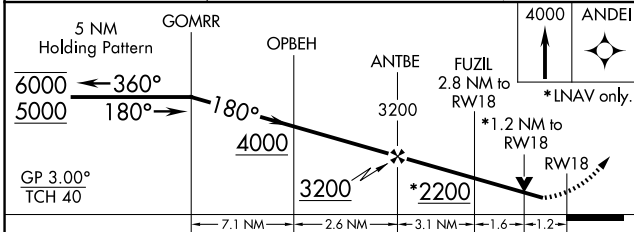
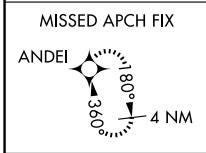
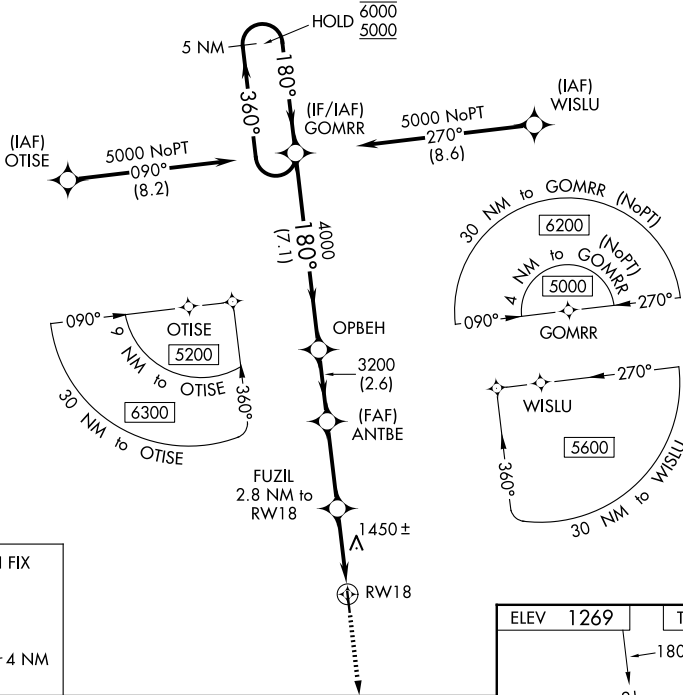
WAAS CH 58317 W18A	APP CRS 180°	Rwy Ldg 5500 TDZE 1269 Apt Elev 1269
--	------------------------	---

RNAV (GPS) RWY 18

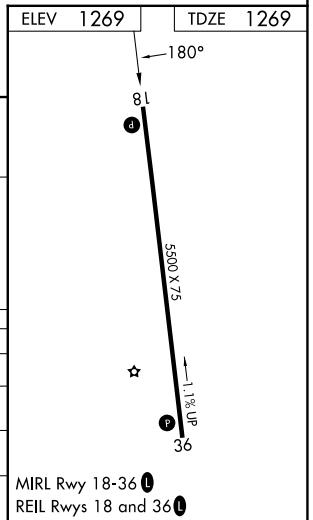
MOUNT AIRY/SURRY COUNTY (M¹WK)

RNP APCH.	MISSED APPROACH: Climb to 4000 direct ANDEI and hold.
<p>▼ Rwy 18 helicopter visibility reduction below $\frac{3}{4}$ SM NA.</p> <p>▲ For uncompensated Baro-VNAV systems, LNAV/VNAV NA below -17°C or above 54°C.</p>	

AWOS-3PT 121.125	GREENSBORO APP CON 124.35 269.225	UNICOM 123.0 (CTAF) ①
----------------------------	---	---------------------------------



CATEGORY	A	B	C	D
LPV DA		1522-1	253 (300-1)	
LNAV/VNAV DA		1742-1 $\frac{3}{8}$	473 (500-1 $\frac{3}{8}$)	
LNAV MDA	1700-1	431 (500-1)	1700-1 $\frac{1}{4}$	431 (500-1 $\frac{1}{4}$)
CIRCLING	1940-1 671 (700-1)	2040-1 771 (800-1)	2180-2 $\frac{3}{4}$ 911 (1000-2 $\frac{3}{4}$)	2340-3 1071 (1100-3)



SE-2, 11 JUN 2026 to 09 JUL 2026

SE-2, 11 JUN 2026 to 09 JUL 2026