

APP CRS	Rwy Idg	5099
024°	TDZE	1265
	Apt Elev	1265

RNAV (GPS) RWY 2

WILBARGER COUNTY (F05)

RNP APCH.

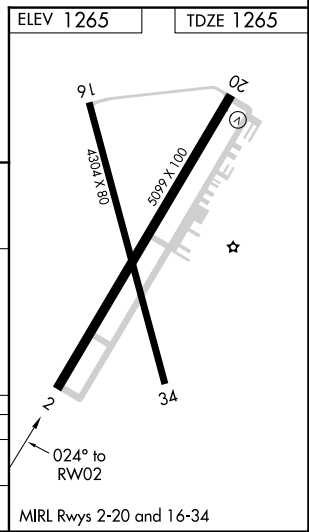
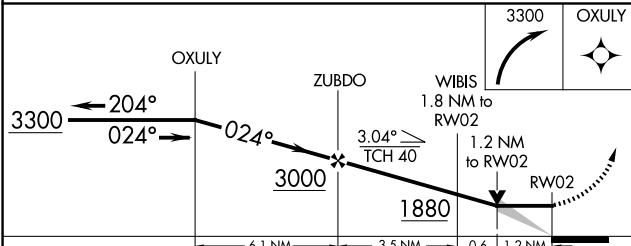
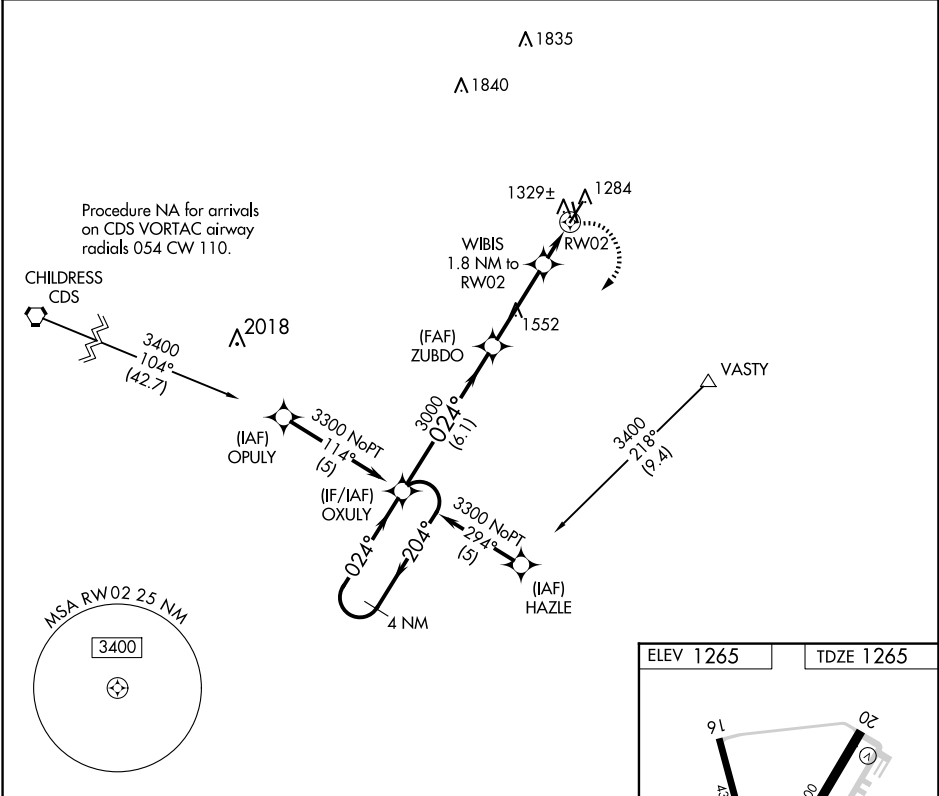
▼ When local altimeter setting not received, use Frederick altimeter setting:
▲ increase all MDA 40 feet. VDP NA when using Frederick altimeter setting.

MISSED APPROACH: Climbing right turn to 3300 direct OXULY and hold.

AWOS-3
118.525

ALTUS APP CON*
125.1 353.7

UNICOM
122.8 (CTAF) 0



CATEGORY	A	B	C	D
RNAV MDA	1680-1	415 (500-1)	1680-1¼ 415 (500-1¼)	NA
CIRCLING	1680-1 415 (500-1)	1720-1 455 (500-1)	1800-1½ 535 (600-1½)	NA

SC-2, 11 JUN 2026 to 09 JUL 2026

SC-2, 11 JUN 2026 to 09 JUL 2026