

WAAS CH <b>70634</b> <b>W26A</b>	APP CRS <b>265°</b>	Rwy Ldg TDZE Apt Elev	<b>5531</b> <b>1835</b> <b>1888</b>
--	------------------------	-----------------------------	---

# RNAV (GPS) RWY 26

TWENTYNINE PALMS (TNP)

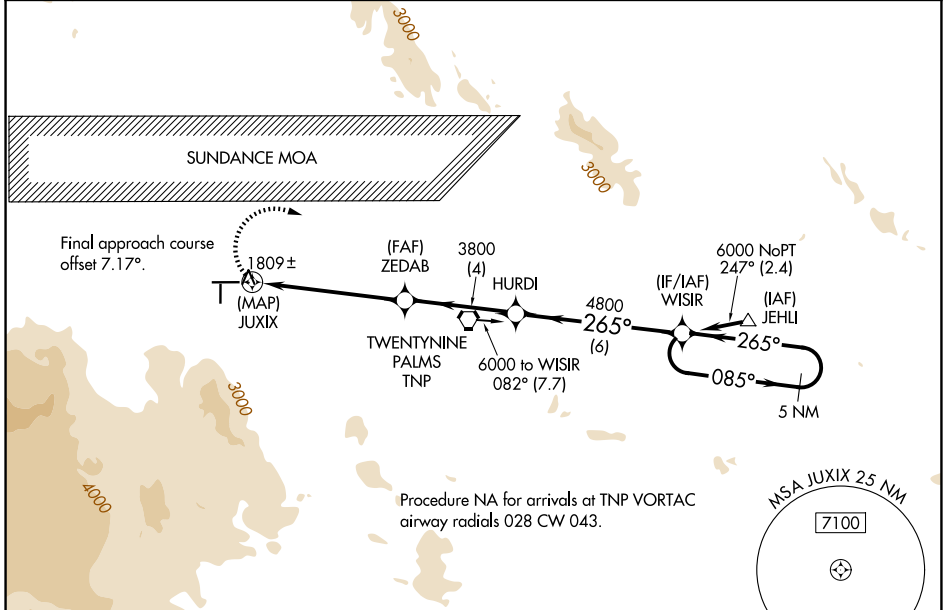
RNP APCH - GPS.

**▼** Use PSP altimeter setting; when not received, procedure NA. Circling NA south of Rwy 8-26. Circling Rwy 8, 17 NA at night.  
**▲** NA \*Missed approach requires minimum climb of 425 feet per NM to 3900.

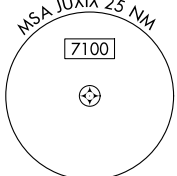
MISSED APPROACH: Climbing right turn to 6000 direct WISIR and hold.

LOS ANGELES CENTER  
**128.15 285.6**

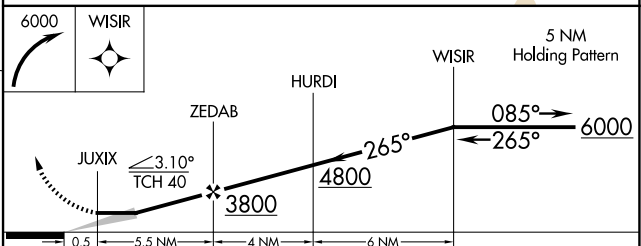
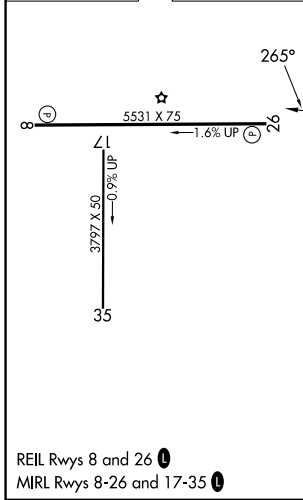
AUNICOM  
**122.8 (CTAF) ①**



Procedure NA for arrivals at TNP VORTAC  
airway radials 028 CW 043.



ELEV 1888	TDZE 1835
-----------	-----------



CATEGORY	A	B	C	D
LP MDA	2940-1¼ 1105 (1100-1¼)	2940-1½ 1105 (1100-1½)		NA
*LNAV MDA	3080-1¼ 1245 (1200-1¼)	3080-1½ 1245 (1200-1½)		NA
LNAV MDA	3180-1¼ 1345 (1300-1¼)	3180-1½ 1345 (1300-1½)		NA
CIRCLING	3300-1¼ 1412 (1500-1¼)	3340-1½ 1452 (1500-1½)		NA

SW-3, 11 JUN 2026 to 09 JUL 2026

SW-3, 11 JUN 2026 to 09 JUL 2026