

WAAS CH 65903 W01A	APP CRS 007°	Rwy Ldg 4206 TDZE 794 Apt Elev 798
--	------------------------	---

RNAV (GPS) RWY 1

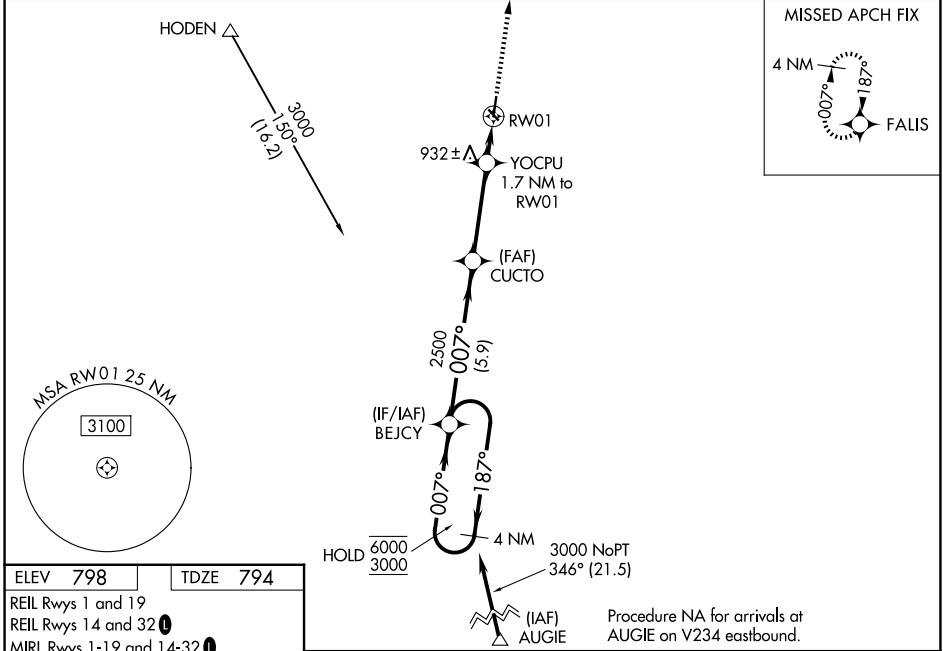
SKYHAVEN (RCM)

RNP APCH - GPS.

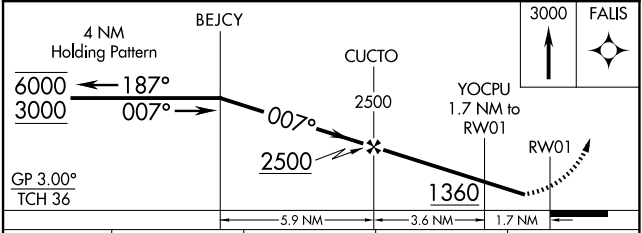
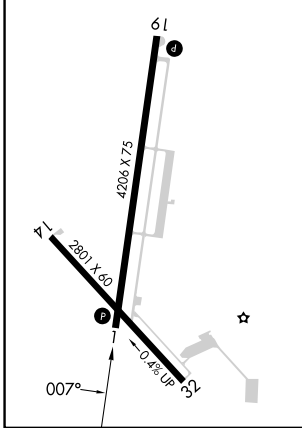
⚠ Baro-VNAV NA when using SZL altimeter setting. Rwy 1 helicopter visibility reduction below 3/4 SM NA. For uncompensated Baro-VNAV systems, LNAV/VNAV NA below -16°C or above 54°C. When local altimeter setting not received, use SZL altimeter setting and increase LPV DA to 1083 feet; increase LNAV/VNAV DA to 1194 feet and all visibilities 1/8 SM; increase all MDAs 40 feet and LNAV visibility Cat C 1/8 SM, and Circling visibility Cat C 1/4 SM.

MISSED APPROACH: Climb to 3000 direct FALIS and hold.

AWOS-3PT 119.575	WHITEMAN APP CON ★ 127.45 284.0	UNICOM 123.0 (CTAF) 0
----------------------------	---	--



ELEV 798	TDZE 794
REIL Rwy 1 and 19	REIL Rwy 14 and 32
MIRL Rwy 1-19 and 14-32	



CATEGORY	A	B	C	D
LPV DA		1044-1 250 (300-1)		NA
LNAV/VNAV DA		1155-1 361 (400-1)		NA
LNAV MDA	1220-1	426 (500-1)	1220-1 1/4 426 (500-1 1/4)	NA
CIRCLING	1260-1 462 (500-1)	1340-1 542 (600-1)	1380-1 1/2 582 (600-1 1/2)	NA

NC-3, 11 JUN 2026 to 09 JUL 2026

NC-3, 11 JUN 2026 to 09 JUL 2026