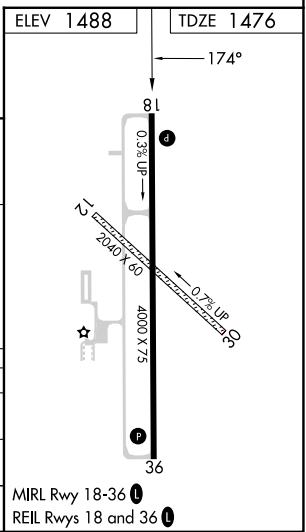
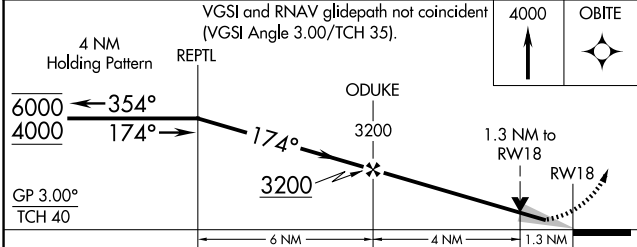
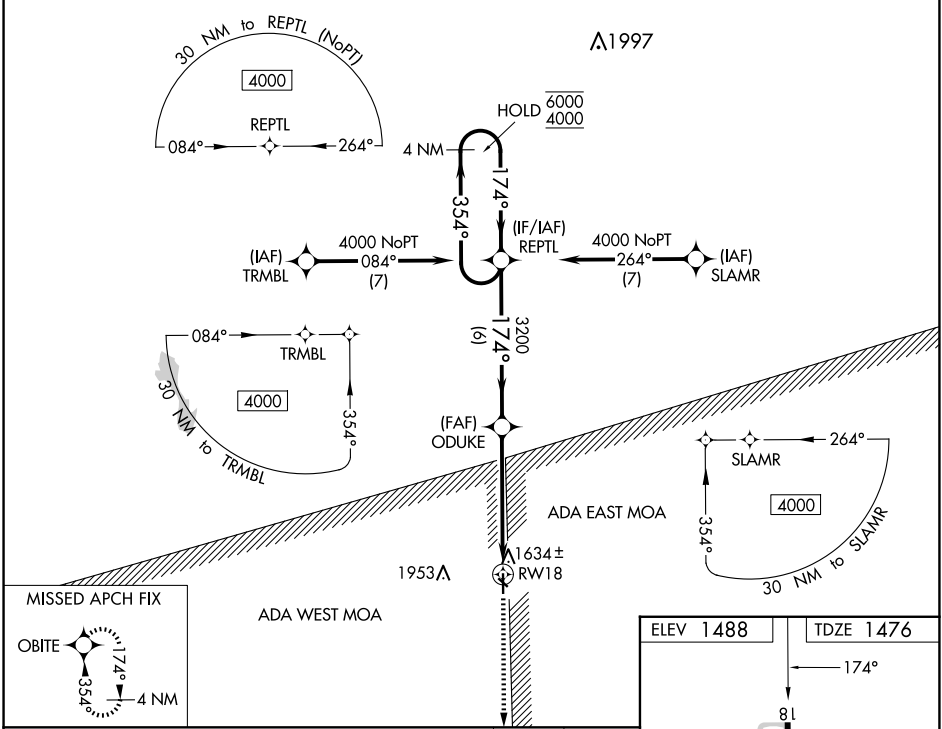


WAAS CH 69244 W18A	APP CRS 174°	Rwy Idg 4000 TDZE 1476 Apt Elev 1488
--	------------------------	---

RNAV (GPS) RWY 18

BLOSSER MUNI (CNK)

RNP APCH-GPS.		MISSED APPROACH: Climb to 4000 direct OBITE and hold.
<p>⚠ Rwy 18 helicopter visibility reduction below 1 SM NA. For uncompensated Baro-VNAV systems, LNAV/VNAV NA below -20°C or above 54°C. Baro-VNAV and VDP NA when using Hebron Muni altimeter setting.</p>		
ASOS 123.825	KANSAS CITY CENTER 134.9 363.2	UNICOM 122.8 (CTAF) 0



CATEGORY	A	B	C	D
LPV DA	1738-1	262 (300-1)		NA
LNAV/VNAV DA	1776-1	300 (300-1)		NA
LNAV MDA	1920-1	444 (500-1)		NA

NC-2, 11 JUN 2026 to 09 JUL 2026

NC-2, 11 JUN 2026 to 09 JUL 2026