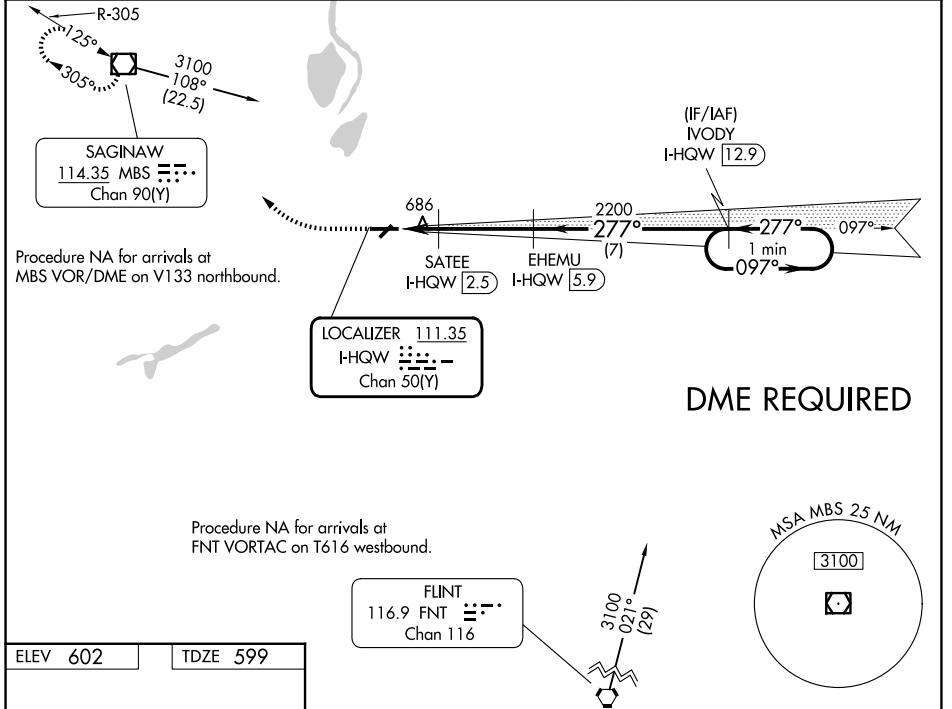


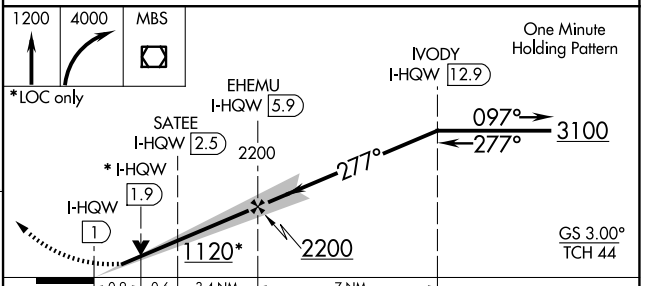
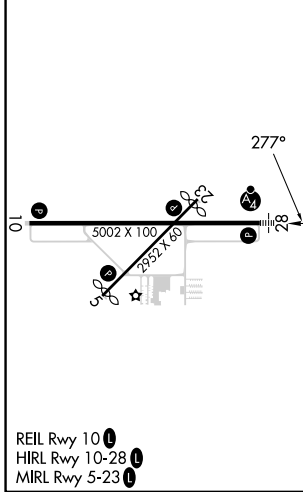
LOC/DME I-HQW <b>111.35</b> Chan 50 (Y)	APP CRS <b>277°</b>	Rwy Ldg TDZE Apt Elev	<b>5002</b> <b>599</b> <b>602</b>
---	------------------------	-----------------------------	---

**ILS or LOC RWY 28**  
SAGINAW COUNTY/H W BROWNE (HYX)

<b>NA</b> Inoperative table does not apply to S-ILS 28. DME required. Circling Rwy 5, 23 NA at night. Circling NA for Cat C north of Rwy 10-28.	<b>MALSF</b> 	<b>MISSED APPROACH:</b> Climb to 1200 then climbing right turn to 4000 direct MBS VOR/DME and hold, continue climb-in-hold to 4000.
<b>AWOS-3P</b> <b>118.325</b>	<b>GREAT LAKES APP CON*</b> <b>120.95 235.625</b>	<b>UNICOM</b> <b>122.8 (CTAF) 0</b>



ELEV 602	TDZE 599
----------	----------



CATEGORY	A	B	C	D
S-ILS 28		802-3/4	203 (200-3/4)	NA
S-LOC 28		940-3/4	341 (400-3/4)	NA
CIRCLING	1100-1	498 (500-1)	1460-2/2 858 (900-2/2)	NA

EC-1, 11 JUN 2026 to 09 JUL 2026

EC-1, 11 JUN 2026 to 09 JUL 2026