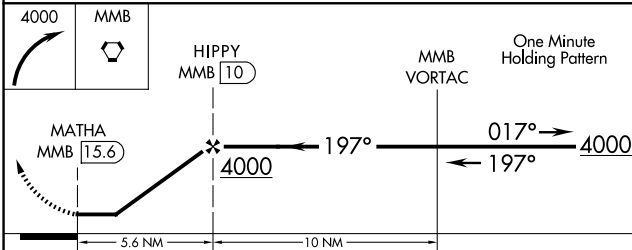
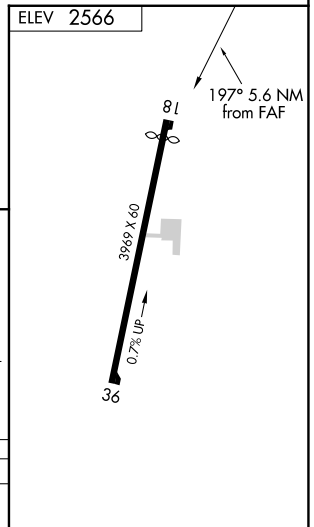
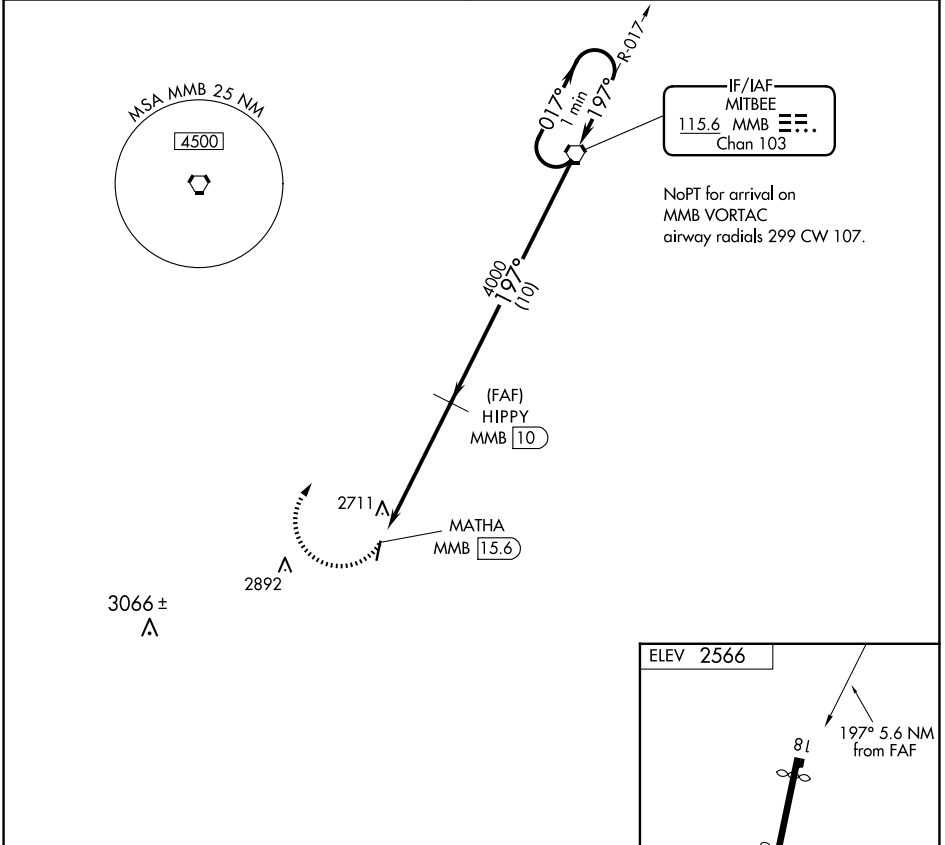


VORTAC MMB 115.6 Chan 103	APP CRS 197°	Rwy Idg TDZE Apt Elev N/A N/A 2566
---	------------------------	--

VOR/DME-A
HIGGINS/LIPSCOMB COUNTY (1X1)

<p>Procedure NA at night. Use Canadian altimeter setting; when not received, use Gage, OK altimeter setting and increase all MDA 20 feet.</p> <p>NA</p>	<p>MISSED APPROACH: Climbing right turn to 4000 direct MMB VORTAC and hold.</p>
---	---

<p>KANSAS CITY CENTER 126.95 379.2</p>	<p>CTAF 122.9 0</p>
---	--------------------------------



CATEGORY	A	B	C	D
CIRCLING	3140-1	574 (600-1)	3140-1½ 574 (600-1½)	NA

SC-2, 11 JUN 2026 to 09 JUL 2026

SC-2, 11 JUN 2026 to 09 JUL 2026