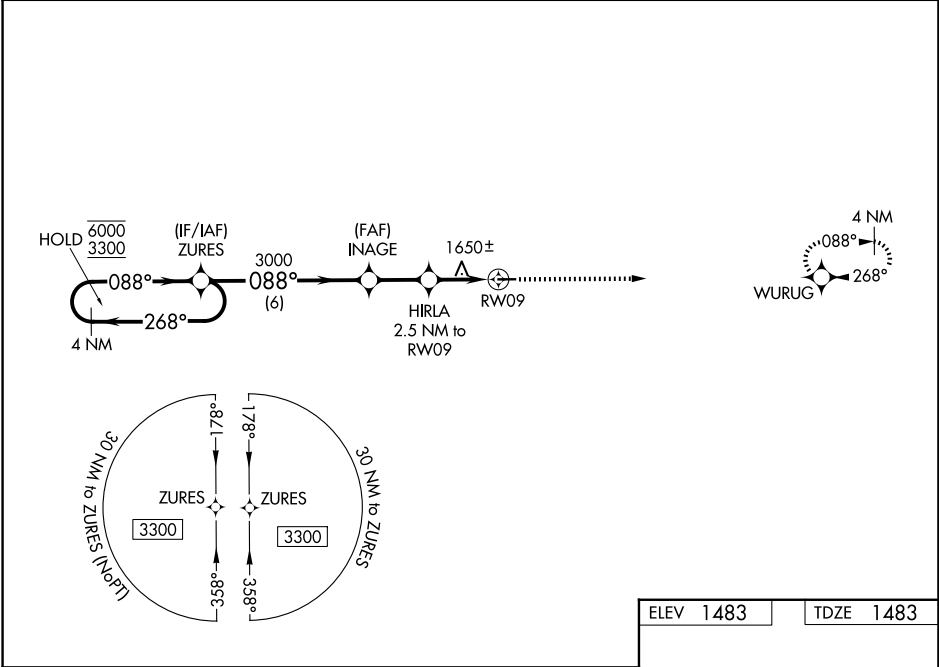


WAAS CH 63133 W09A	APP CRS 088°	Rwy Ldg 3599 TDZE 1483 Apt Elev 1483
--	------------------------	---

RNAV (GPS) RWY 9

CASSVILLE MUNI (94K)

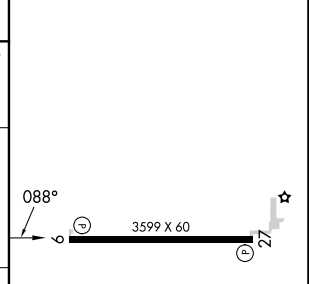
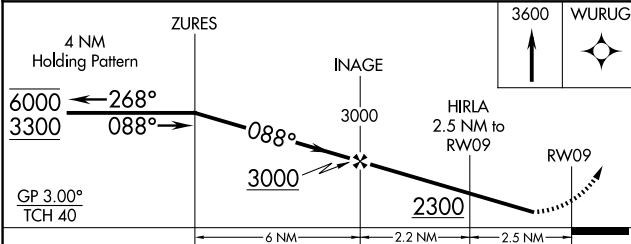
RNP APCH - GPS.		MISSED APPROACH: Climb to 3600 direct WURUG and hold.
<p>▽ Rwy 9 helicopter visibility reduction below ¼ SM NA. Baro-VNAV NA.</p> <p>⚠ NA Use Monett altimeter setting; when not received, use Rogers altimeter setting and increase LPV DA to 1906 feet and visibility ⅓ SM all Cats, LNAV/VNAV DA to 2011 feet and visibility ⅓ SM all Cats; increase all MDAs 20 feet.</p>		
HFJ AWOS-3 118.275	SPRINGFIELD APP CON 124.95 318.2	CTAF 122.9



NC-3, 11 JUN 2026 to 09 JUL 2026

NC-3, 11 JUN 2026 to 09 JUL 2026

ELEV 1483	TDZE 1483
------------------	------------------



CATEGORY	A	B	C	D
LPV DA	1893-1½	410 (500-1½)		NA
LNAV/VNAV DA	1998-1¾	515 (600-1¾)		NA
LNAV MDA	1960-1	477 (500-1)	1960-1¾ 477 (500-1¾)	NA
CIRCLING	2000-1 517 (600-1)	2180-1 697 (700-1)	2180-2 697 (700-2)	NA

MRL Rwy 9-27