

LOC I-MQJ 108.7	APP CRS 252°	Rwy Ldg TDZE Apt Elev	6005 861 862
---------------------------	------------------------	-----------------------------	---

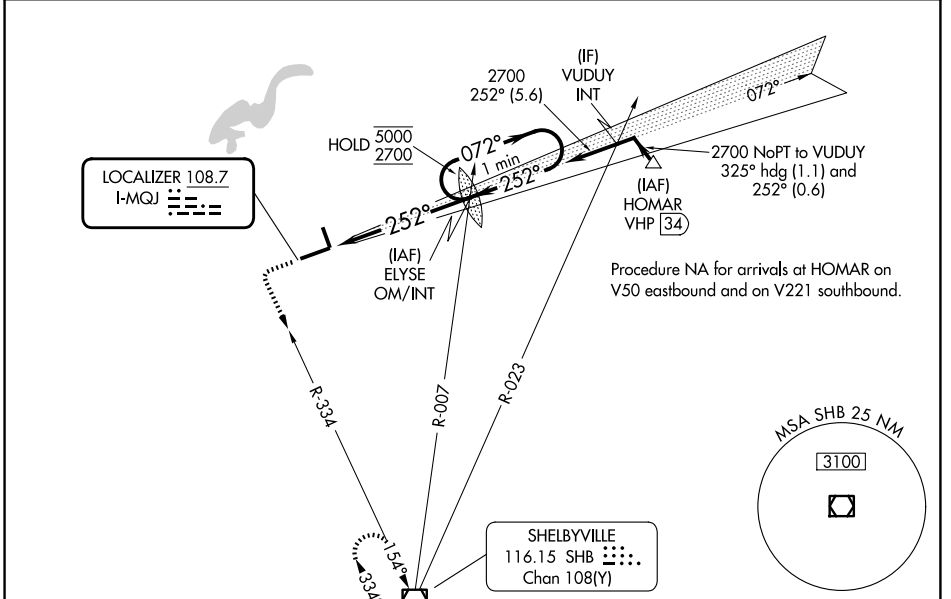
ILS or LOC RWY 25

INDIANAPOLIS RGNL (MQJ)

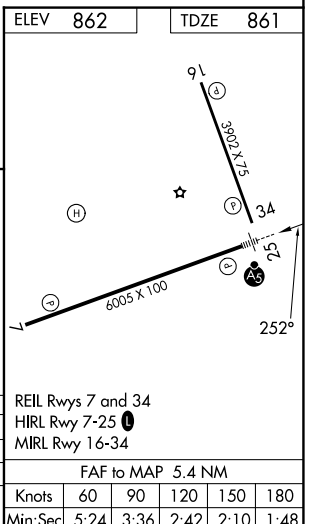
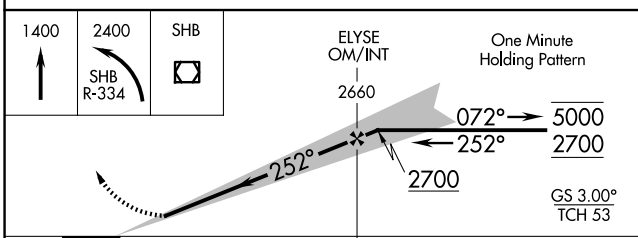
NA Inop table does not apply to S-ILS 25. Rwy 25 helicopter visibility reduction below 3/4 SM NA. For inop ALS, increase S-LOC 25 Cat A and B visibility to 1 SM, and Cat C and D visibility to 1 3/8 SM. When local altimeter setting not received, use IND altimeter setting and increase S-ILS 25 DA to 1166 feet; increase all MDAs 60 feet and S-LOC 25, and Circling visibility Cat C/D 1/4 SM.

MALSR MISSED APPROACH: Climb to 1400 then climbing left turn to 2400 on SHB VOR/DME R-334 to SHB VOR/DME and hold.

AWOS-3PT 124.175	INDIANAPOLIS APP CON 127.15 317.8	UNICOM 122.975 (CTAF)
----------------------------	---	---------------------------------



ELEV 862	TDZE 861
----------	----------



CATEGORY	A	B	C	D	FAF to MAP 5.4 NM							
S-ILS 25	1111-3/4 250 (300-3/4)				1380-1	519 (600-1)	Knots	60	90	120	150	180
S-LOC 25	1380-3/4	519 (600-3/4)	1380-1		519 (600-1)	Min:Sec	5:24	3:36	2:42	2:10	1:48	
CIRCLING	1380-1	518 (600-1)	1380-1 1/2	1660-2 1/2	798 (800-2 1/2)							

EC-2, 11 JUN 2026 to 09 JUL 2026

EC-2, 11 JUN 2026 to 09 JUL 2026