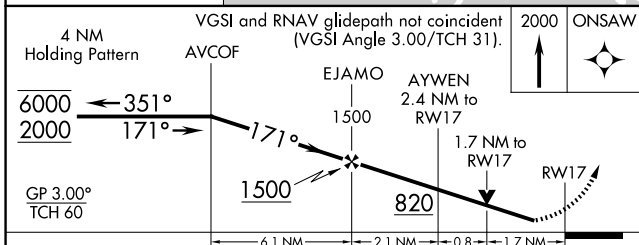
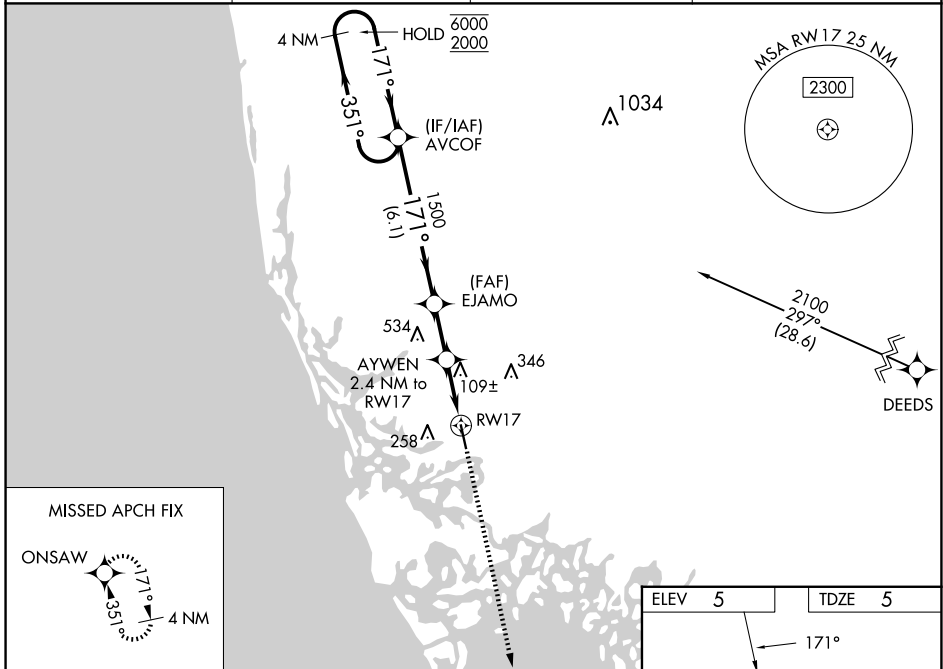


WAAS CH <b>93516</b> <b>W17A</b>	APP CRS <b>171°</b>	Rwy Idg <b>5000</b> TDZE <b>5</b> Apt Elev <b>5</b>
----------------------------------------	------------------------	-----------------------------------------------------------

# RNAV (GPS) RWY 17

MARCO ISLAND EXEC (MKY)

RNP APCH-GPS.			MISSED APPROACH: Climb to 2000 direct ONSAW and hold.
<p><b>⚠</b> Baro-VNAV and VDP NA when using APF altimeter setting. Rwy 17 helicopter visibility reduction below <math>\frac{3}{4}</math> SM NA. For uncompensated Baro-VNAV systems, LNAV/VNAV NA below 2°C or above 54°C. When local altimeter setting not received, use APF altimeter setting and increase LPV DA to 326 feet; increase LNAV/VNAV DA to 484 feet; increase all MDAs 40 feet and visibility Cat C <math>\frac{1}{4}</math> SM.</p>			
AWOS-3PT <b>120.075</b>	FORT MYERS APP CON * <b>124.125 371.85</b>	CLNC DEL <b>120.8</b>	UNICOM <b>122.7</b> (CTAF) <b>0</b>



ELEV 5	TDZE 5
171°	
REIL Rwy 17 and 35 <b>0</b>	
MIRL Rwy 17-35 <b>0</b>	

CATEGORY	A	B	C	D
LPV DA		300-1	295 (300-1)	
LNAV/VNAV DA		458-1½	453 (500-1½)	
LNAV MDA	560-1	555 (600-1)	560-1½ 555 (600-1½)	560-1¾ 555 (600-1¾)
CIRCLING	620-1	615 (700-1)	660-1¾ 655 (700-1¾)	840-2¾ 835 (900-2¾)

SE-3, 11 JUN 2026 to 09 JUL 2026

SE-3, 11 JUN 2026 to 09 JUL 2026