

WAAS CH 50416 W02A	APP CRS 020°	Rwy Idg 6100 TDZE 3786 Apt Elev 3788
--	------------------------	---

RNAV (GPS) RWY 2

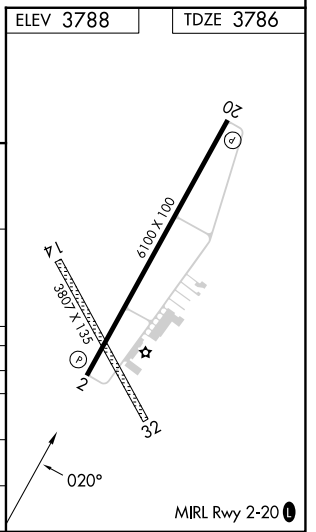
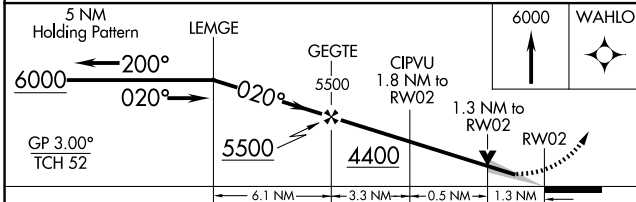
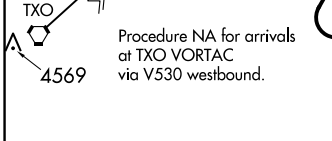
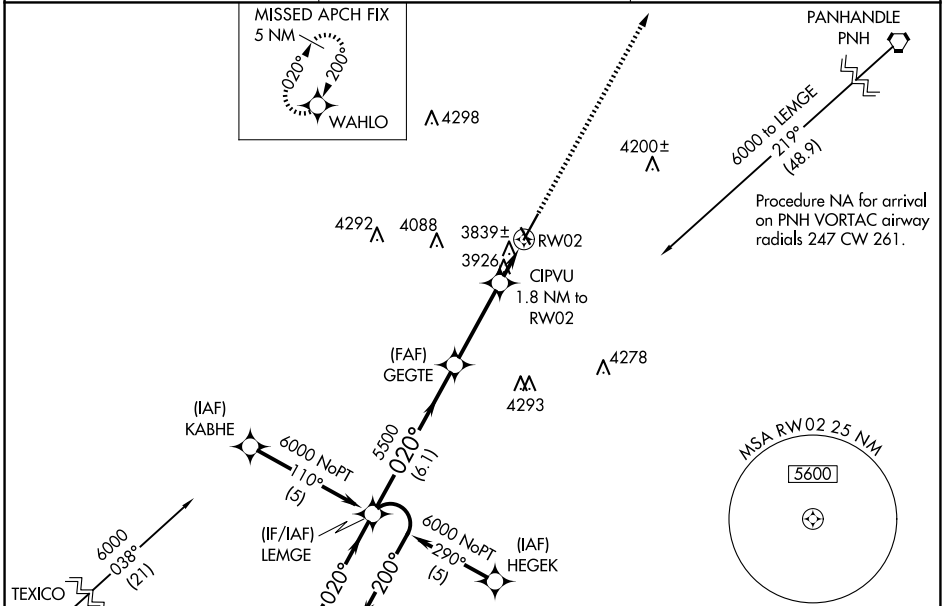
HEREFORD MUNI (HR.X)

RNP APCH - GPS.

⚠ For uncompensated Baro-VNAV systems, LNAV/VNAV NA below -22°C or above 41°C. When local altimeter setting not received, use AMA altimeter setting: increase LPV DA to 4098 feet and all visibilities ¼ SM; increase LNAV/VNAV DA to 4238 feet and all visibilities ¼ SM; increase all MDAs 120 feet and LNAV visibility Cats C and D ¼ SM, increase Circling visibility Cat C ½ SM and Cat D ¼ SM. Circling NA to Rwys 14 and 32. Baro-VNAV and VDP NA when using AMA altimeter setting.

MISSED APPROACH: Climb to 6000 direct WAHLO and hold.

AWOS-3 118.05	AMARILLO APP CON ★ 119.5 307.0	UNICOM 122.8 (CTAF) 0
-------------------------	--	---------------------------------



CATEGORY	A	B	C	D
LPV DA	3986-¾ 200 (200-¾)			
LNAV/DA VNAV	4126-1¼ 340 (400-1¼)			
LNAV MDA	4240-1	454 (500-1)	4240-1¼ 454 (500-1¼)	4240-1½ 454 (500-1½)
CIRCLING	4280-1	492 (500-1)	4440-1¾ 652 (700-1¾)	4620-2¾ 832 (900-2¾)

SC-2, 11 JUN 2026 to 09 JUL 2026

SC-2, 11 JUN 2026 to 09 JUL 2026