

WAAS CH 78238 W17A	APP CRS 174°	Rwy Ldg 4149 TDZE 1232 Apt Elev 1232
--	------------------------	---

RNAV (GPS) RWY 17

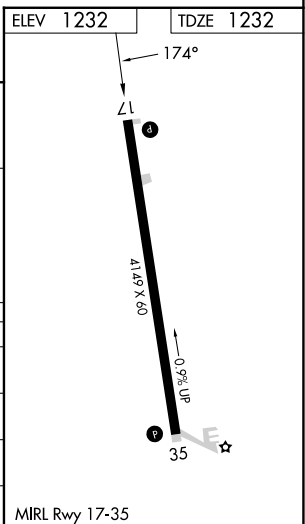
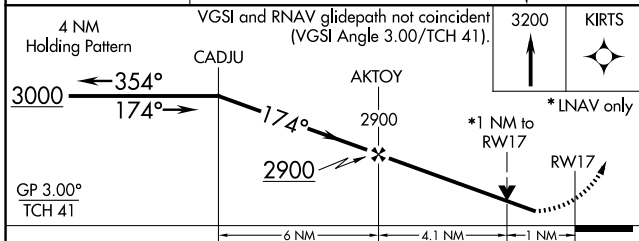
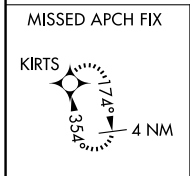
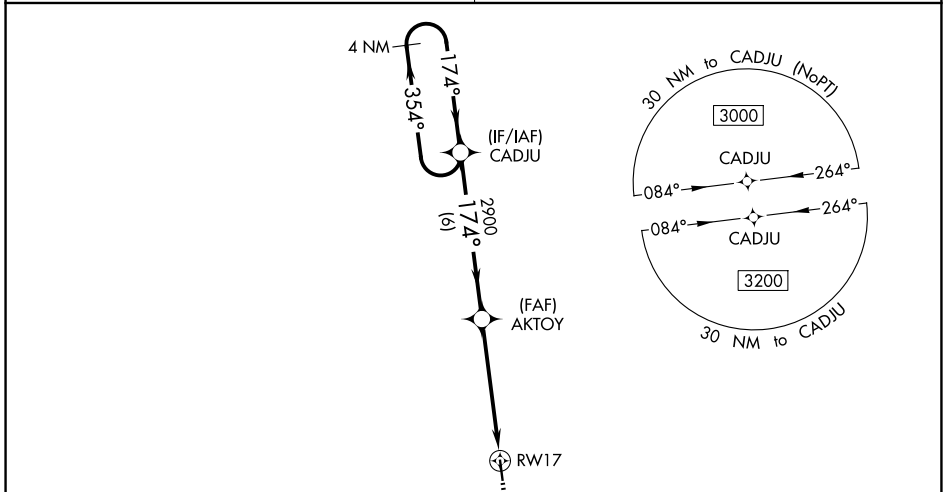
GEORGE L SCOTT MUNI (3Y2)

RNP APCH.

NA For uncompensated Baro-VNAV systems, LNAV/VNAV NA below -17°C (2°F) or above 54°C (130°F). Baro-VNAV and VDP NA when using DecoraH altimeter setting. Helicopter visibility reduction below 3/4 SM NA. Obtain local altimeter setting on CTAF; when not received, use DecoraH altimeter setting and increase LPV and LNAV/VNAV DA to 1533 all Cats, increase all MDA 60 feet, and LNAV Cat C visibility 1/8 mile.

MISSED APPROACH: Climb to 3200 direct KIRTS and hold.

MINNEAPOLIS CENTER 118.85	UNICOM 122.8 (CTAF)
-------------------------------------	-------------------------------



CATEGORY	A	B	C	D
LPV DA		1482-1 250 (300-1)		NA
LNAV/VNAV DA		1482-1 250 (300-1)		NA
LNAV MDA		1580-1 348 (400-1)		NA
CIRCLING	1740-1 508 (600-1)		1860-1 3/4 628 (700-1 3/4)	NA

MIRL Rwy 17-35

NC-3, 11 JUN 2026 to 09 JUL 2026

NC-3, 11 JUN 2026 to 09 JUL 2026