

APP CRS	Rwy Ldg	4001
286°	TDZE	683
	Apt Elev	683

RNAV (GPS) RWY 28

HENRY COUNTY (7W5)

RNP APCH.

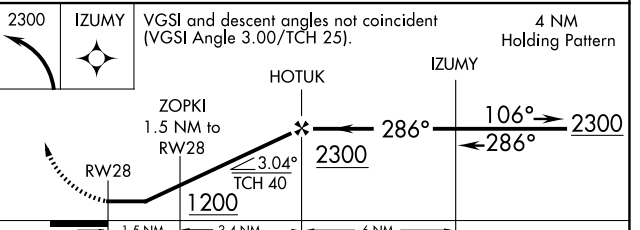
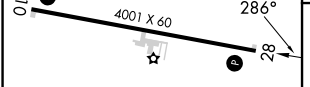
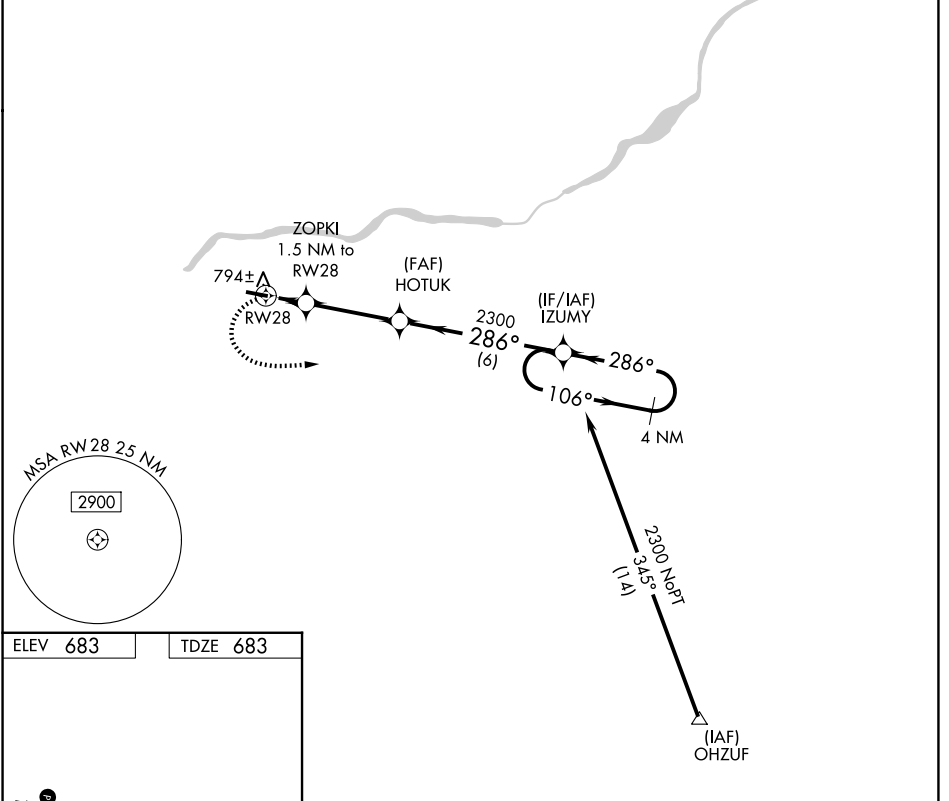
▼ Rwy 28 helicopter visibility reduction below 3/4 SM NA.
▲ NA Circling Rwy 10 NA at night. Use Toledo Express altimeter setting. When not received, procedure NA.

MISSED APPROACH: Climbing left turn to 2300 direct IZUMY and hold.

TOL ASOS	118.75 290.225
----------	-----------------------

TOLEDO APP CON	134.35 307.0
----------------	---------------------

UNICOM	123.0 (CTAF) 0
--------	-----------------------



ELEV	683	TDZE	683
REIL Rwy 10-28	0	MIRL Rwy 10-28	0

CATEGORY	A	B	C	D
LNAV MDA	1100-1	417 (500-1)	1100-1 1/8 417 (500-1 1/8)	NA
CIRCLING	1220-1	537 (600-1)	1400-2 717 (800-2)	NA

EC-2, 11 JUN 2026 to 09 JUL 2026

EC-2, 11 JUN 2026 to 09 JUL 2026