

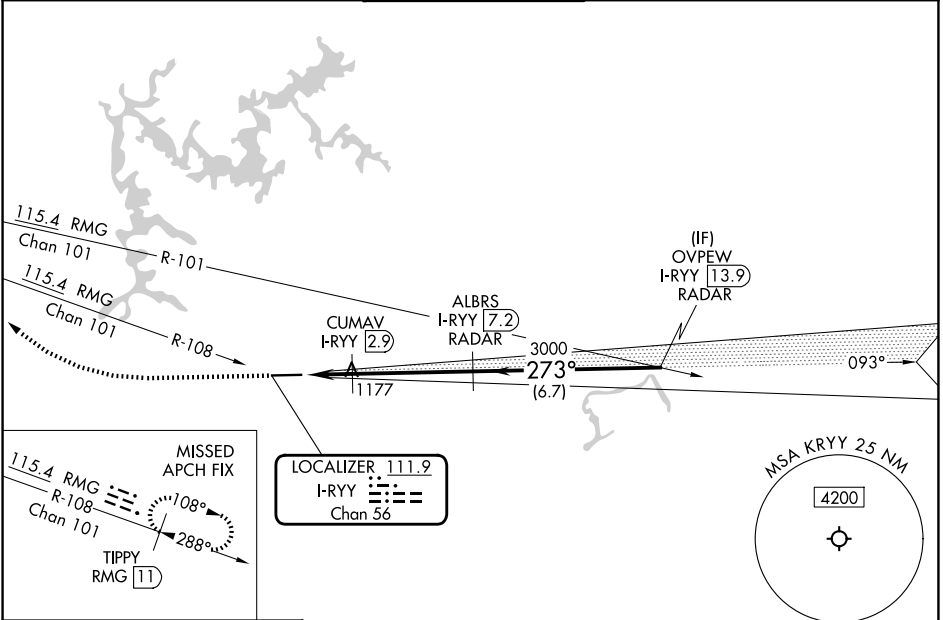
LOC/DME I-RYY 111.9 Chan 56	APP CRS 273°	Rwy Ldg TDZE Apt Elev	5374 1011 1040
--	------------------------	-----------------------------	---

ILS or LOC RWY 27

COBB COUNTY INTL/MCCOLLUM FLD (RYY)

DME required. RADAR required for procedure entry.		MALSIF	MISSED APPROACH: Climb to 1600 then climbing right turn to 3500 on heading 300° and on RMG VORTAC R-108 to TIPPY/RMG 11 DME and hold.
Inop table does not apply to S-ILS 27.			

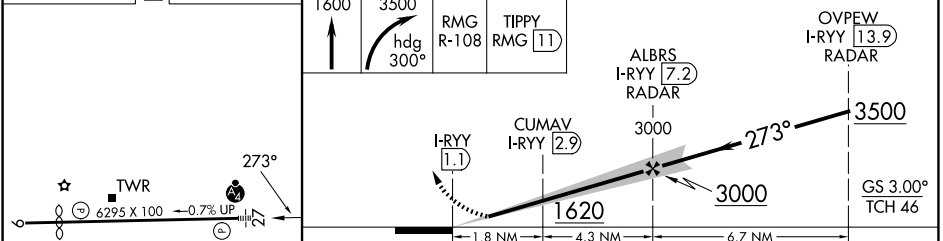
ATIS 128.125	ATLANTA APP CON 121.0 268.7	MCCOLLUM TOWER ★ 125.9 (CTAF) 0	GND CON 119.0	UNICOM 122.7
------------------------	---------------------------------------	---	-------------------------	------------------------



SE-4, 11 JUN 2026 to 09 JUL 2026

SE-4, 11 JUN 2026 to 09 JUL 2026

ELEV 1040	D	TDZE 1011
-----------	----------	-----------



CATEGORY	A	B	C	D
S-ILS 27	1211-¾ 200 (200-¾)			
S-LOC 27	1620-¾	609 (600-¾)	1620-1½	609 (600-1½)
CIRCLING	1800-1	760 (800-1)	2180-3	1140 (1200-3)
CUMAV FIX MINIMUMS				
S-LOC 27	1480-¾	469 (500-¾)	1480-1½	469 (500-1½)
CIRCLING	1800-1	760 (800-1)	2180-3	1140 (1200-3)

HIRL Rwy 9-27 0

FAF to MAP 6.1 NM

Knots	60	90	120	150	180
Min:Sec	6:06	4:04	3:03	2:26	2:02