

LOC/DME I-MKJ 110.5 Chan 42	APP CRS 259°	Rwy Ldg TDZE 5252 2519	Apt Elev 2558
--	------------------------	--	-------------------------

LOC RWY 26
MOUNTAIN EMPIRE (MKJ)

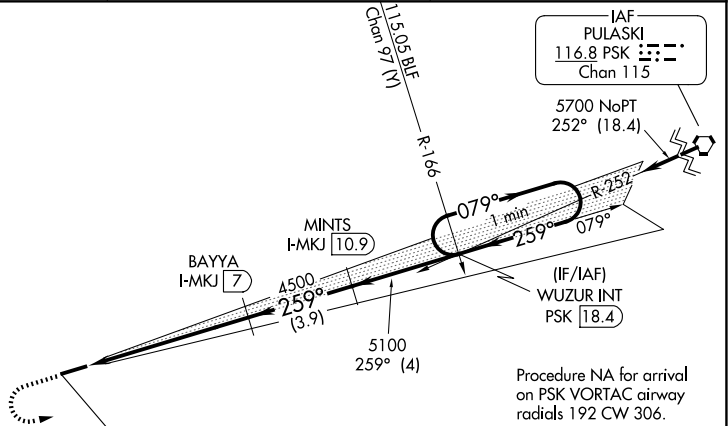
NA Circling NA north of Rwy 8-26.
Helicopter visibility reduction below 3/4 SM NA.
DME required.

MISSED APPROACH: Climb to 4600 then climbing left turn to 6000 on heading 070° and PSK VORTAC R-252 to WUZUR INT and hold.

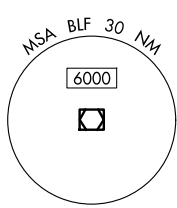
AWOS-3 123.875	ATLANTA CENTER 127.85 269.3	UNICOM 122.7 (CTAF) 0
--------------------------	---------------------------------------	---------------------------------

ALTERNATE MISSED APCH FIX

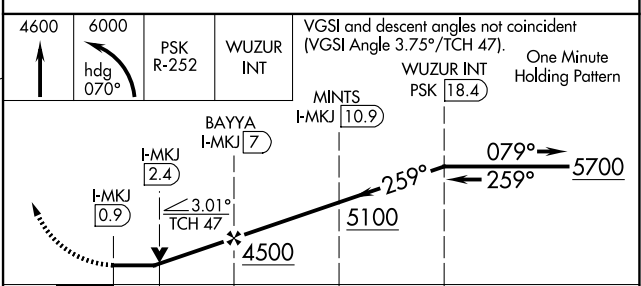
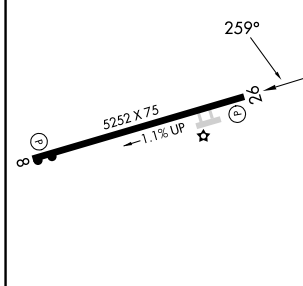
BLUEFIELD
BLF
115.05
Chan 97 (Y)



Procedure NA for arrival on PSK VORTAC airway radials 192 CW 306.



ELEV 2558	TDZE 2519
-----------	-----------



REIL Rwys 8 and 26 MIRL Rwy 8-26 0	FAF to MAP 6.1 NM	Knots 60 90 120 150 180 Min:Sec 6:06 4:04 3:03 2:26 2:02			
CATEGORY	A	B	C	D	
S-26	3160-1	641 (700-1)	3160-1 7/8 641 (700-1 7/8)	NA	
CIRCLING	3260-1	702 (800-1)	4440-3 1882 (1900-3)	NA	

NE-3, 11 JUN 2026 to 09 JUL 2026

NE-3, 11 JUN 2026 to 09 JUL 2026