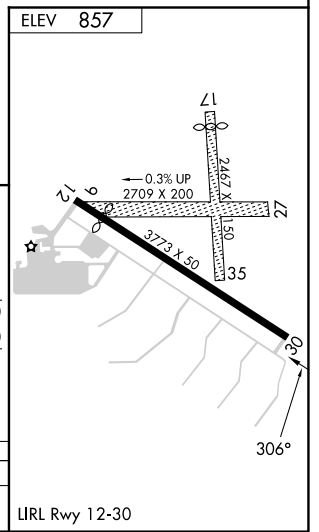
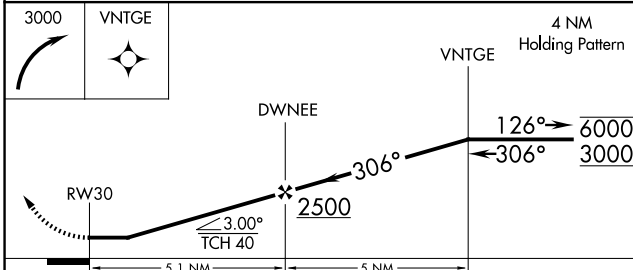
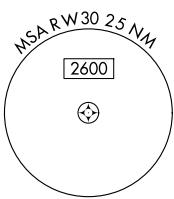
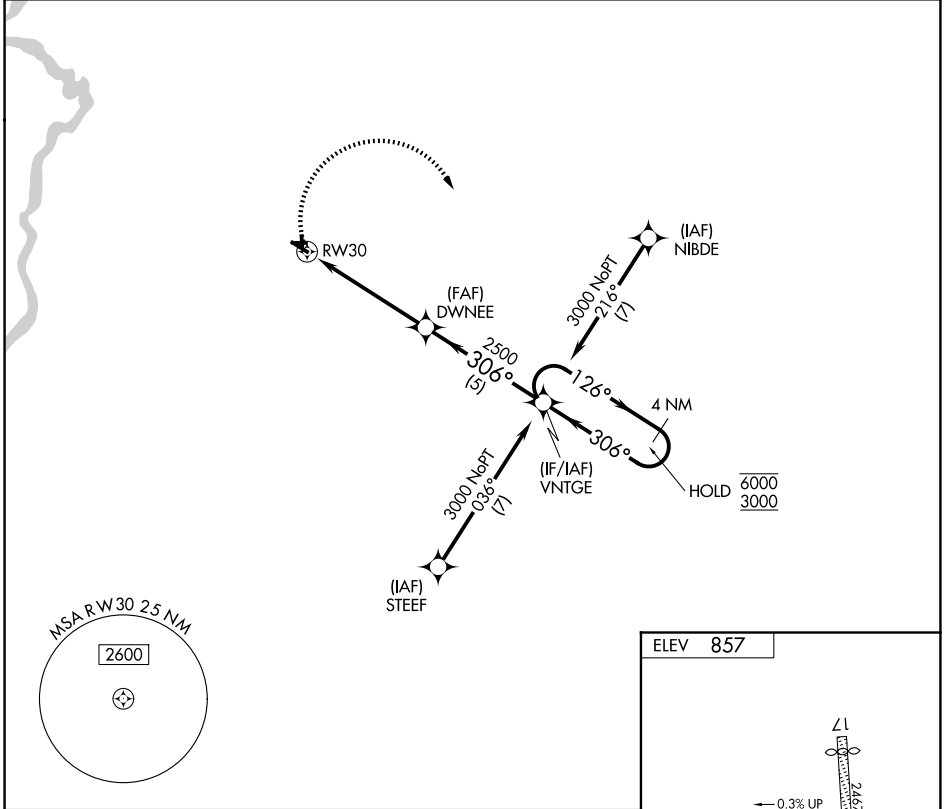


APP CRS <b>306°</b>	Rwy Ldg TDZE Apt Elev	<b>N/A</b> <b>N/A</b> <b>857</b>
------------------------	-----------------------------	--

# RNAV (GPS)-A

POPLAR GROVE (C77)

RNP APCH - GPS.		MISSED APPROACH: Climbing right turn to 3000 direct VNTGE and hold.
<p><b>▼</b> Circling NA to Rwys 09, 17, 27 and 35. Procedure NA at night.  <b>▲</b> NA Rwy 12 and 30 helicopter visibility reduction below 1 SM NA.                  Use Chicago/Rockford altimeter setting.</p>		
RFD ASOS <b>127.6</b>	ROCKFORD APP CON <b>121.0 327.0</b>	UNICOM <b>122.8 (CTAF)</b>



CATEGORY	A	B	C	D
CIRCLING	1380-1	523 (600-1)	1560-2 703 (800-2)	NA

EC-3, 11 JUN 2026 to 09 JUL 2026

EC-3, 11 JUN 2026 to 09 JUL 2026