

WAAS CH 73032 W10A	APP CRS 099°	Rwy Idg TDZE 1179 Apt Elev 1182
--	------------------------	---

RNAV (GPS) RWY 10

MOUNTAIN VIEW (MNF)

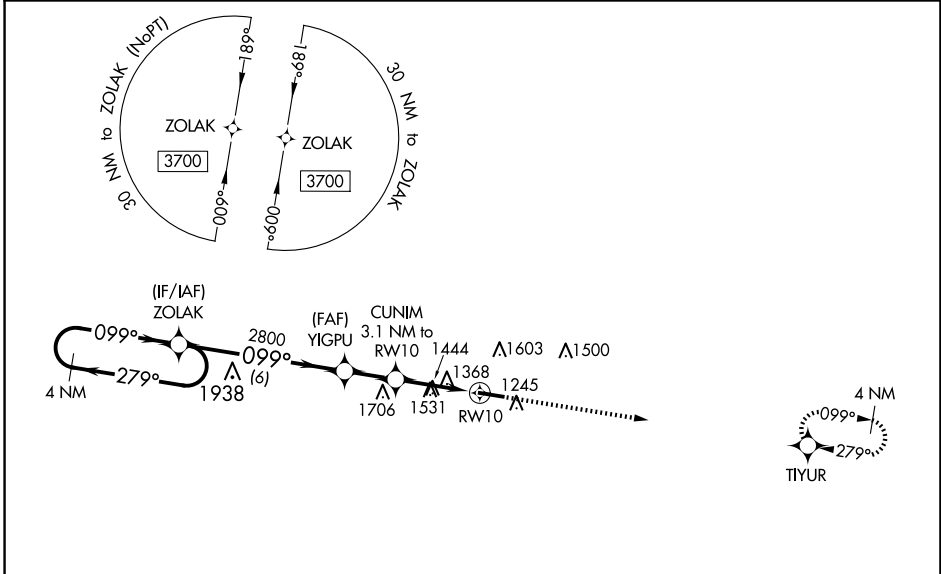
RNP APCH - GPS.

Procedure NA at night. Rwy 10 helicopter visibility reduction below 1 SM

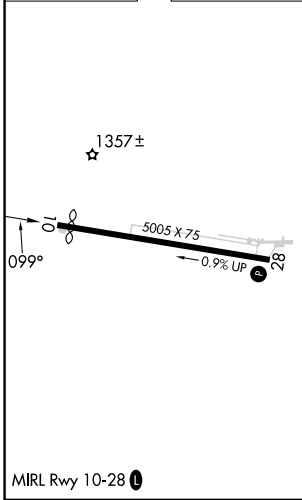
NA. Use West Plains altimeter setting, when not received, use Fort Leonard Wood altimeter setting and increase all MDA 80 feet; increase LP Cats C and D visibility ¼ mile, increase LNAV Cat B visibility ¼ mile, LNAV Cats C and D visibility ⅓ mile, and increase Circling Cats B and C visibility ¼ mile.

MISSED APPROACH: Climb to 3700 direct TIYUR and hold.

UNO ASOS 123.825	KANSAS CITY CENTER 128.35 284.675	UNICOM 122.8 (CTAF)
----------------------------	---	-------------------------------



ELEV 1182	TDZE 1179
-----------	-----------



Visual Segment - Obstacles.				3700	TIYUR
4 NM Holding Pattern				3700	TIYUR
3700 ← 279°				099° →	
ZOLAK				099°	
YIGPU				2800	
CUNIM 3.1 NM to RW10				2200	
RW10					
				6 NM	1.9 NM
				3.1 NM	
CATEGORY	A	B	C	D	
LP MDA	1780-1	601 (600-1)	1780-1¾	601 (600-1¾)	
LNAV MDA	1820-1	641 (700-1)	1820-1⅞	641 (700-1⅞)	
CIRCLING	1880-1 698 (700-1)	2080-1¼ 898 (900-1¼)	2080-2¾ 898 (900-2¾)	2180-3 998 (1000-3)	

NC-3, 11 JUN 2026 to 09 JUL 2026

NC-3, 11 JUN 2026 to 09 JUL 2026