

WAAS CH <b>78131</b> <b>W16A</b>	APP CRS <b>164°</b>	Rwy Ldg TDZE Apt Elev	<b>4000</b> <b>1206</b> <b>1206</b>
--	------------------------	-----------------------------	---

# RNAV (GPS) RWY 16

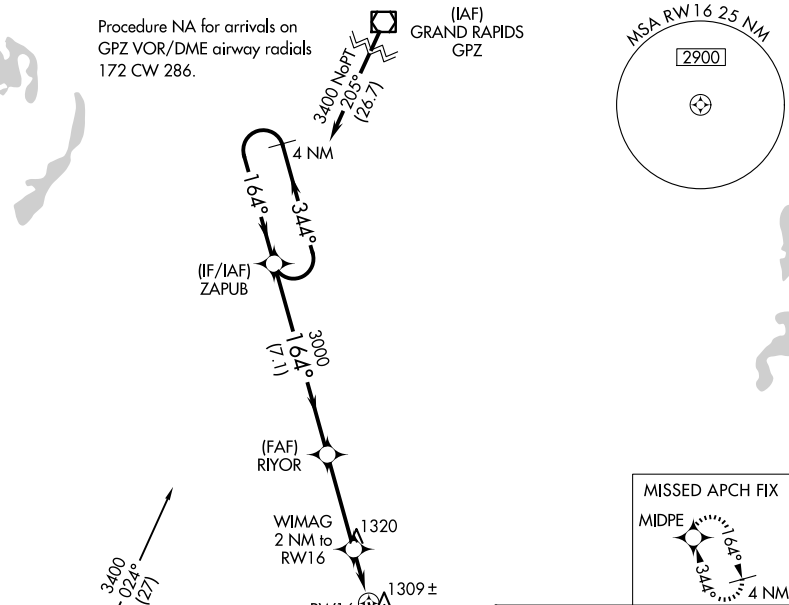
AITKIN MUNI/STEVE KURTZ FLD (AIT)

**▽** For uncompensated Baro-VNAV systems, LNAV/VNAV NA below -17°C (2°F) or above 54°C (130°F).  
**▲** Baro-VNAV and VDP NA when using Mc Gregor altimeter setting. DME/DME RNP-0.3 NA. When local altimeter setting not received; use Mc Gregor altimeter setting and increase all DA and MDA 40 feet; increase LPV all Cats visibilities ¼ SM, LNAV/VNAV all Cats and LNAV Cat C visibilities ½ SM. Circling NA to Rwys 8 and 26. Rwy 16 helicopter visibility reduction below ¾ SM NA.

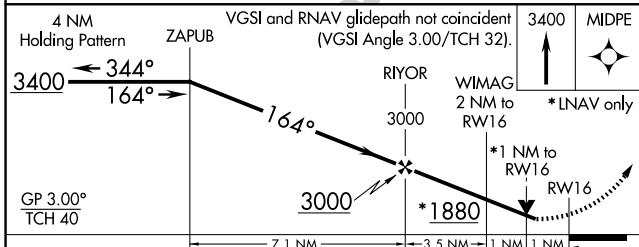
**MISSED APPROACH:**  
Climb to 3400 direct MIDPE and hold.

AWOS-3 <b>118.675</b>	MINNEAPOLIS CENTER <b>118.05 239.0</b>	UNICOM <b>123.05 (CTAF) 0</b>
--------------------------	---	----------------------------------

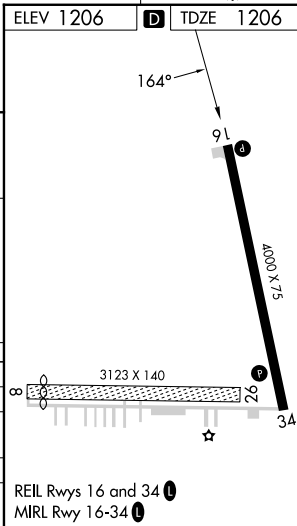
Procedure NA for arrivals on GPZ VOR/DME airway radials 172 CW 286.



ELEV 1206	<b>D</b> TDZE 1206
-----------	--------------------



CATEGORY	A	B	C	D
LPV DA	1518-1	312 (400-1)		NA
LNAV/VNAV DA	1607-1 3/8	401 (500-1 3/8)		NA
LNAV MDA	1560-1	354 (400-1)		NA
CIRCLING	1780-1	574 (600-1)	1900-2 694 (700-2)	NA



NC-1, 11 JUN 2026 to 09 JUL 2026

NC-1, 11 JUN 2026 to 09 JUL 2026