

APP CRS <b>124°</b>	Rwy Idg <b>3005</b> TDZE <b>21</b> Apt Elev <b>21</b>
------------------------	---

# RNAV (GPS) RWY 12

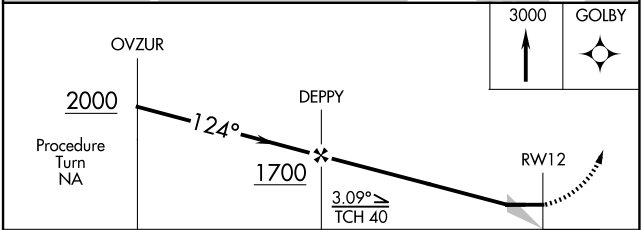
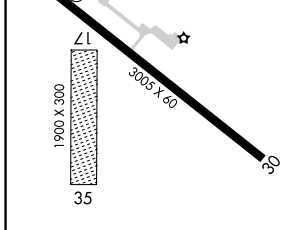
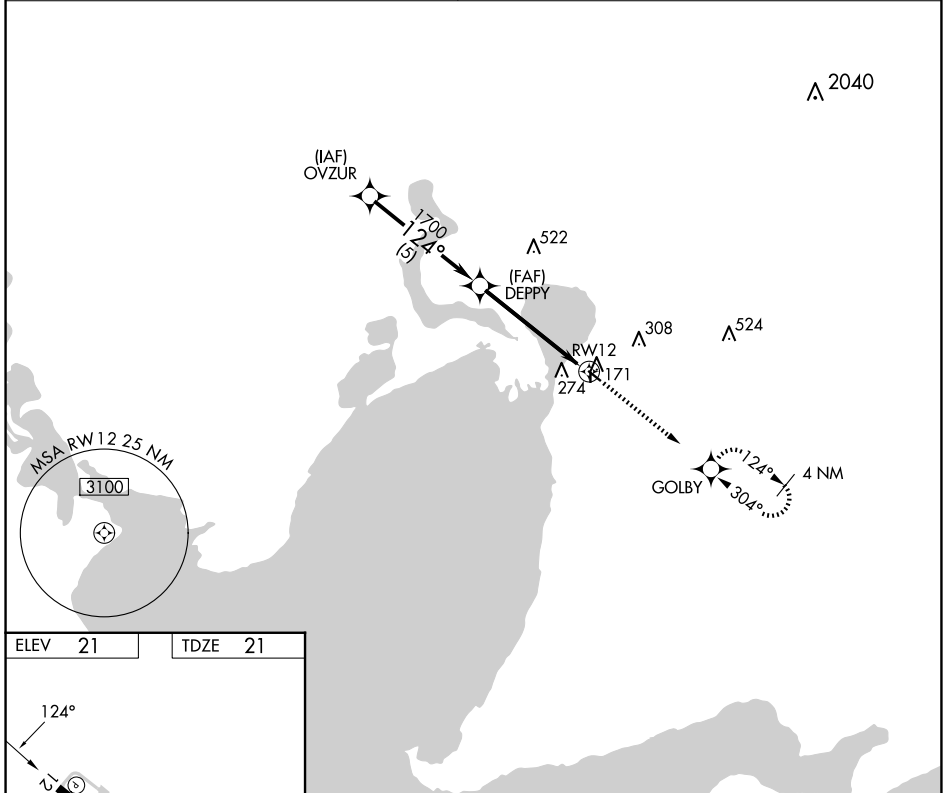
CHAMBERS COUNTY (T00)

**▼** RADAR required. Use William P Hobby altimeter setting. GPS or RNP-0.3 required.  
**▲ NA** DME/DME RNP-0.3 NA. Procedure NA at night. Rwy 12 helicopter visibility reduction below 1 SM NA. Circling NA to Rwy 17 and 35.

MISSED APPROACH: Climb to 3000 direct GOLBY WP and hold.

HOUSTON APP CON  
**134.45 284.0**

CTAF  
**122.9 0**



CATEGORY	A	B	C	D
LNAV MDA	560-1	539 (600-1)	560-1½ 539 (600-1½)	NA
CIRCLING	660-1	639 (700-1)	700-2 679 (700-2)	NA

MIRL Rwy 12-30 **0**  
LIRL Rwy 12-30

SC-5, 11 JUN 2026 to 09 JUL 2026

SC-5, 11 JUN 2026 to 09 JUL 2026