

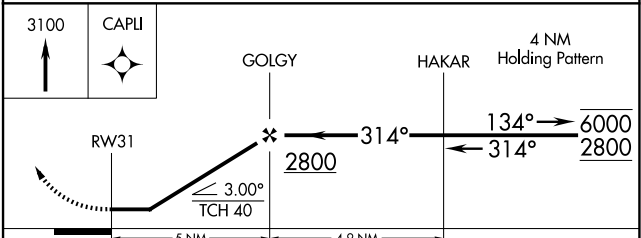
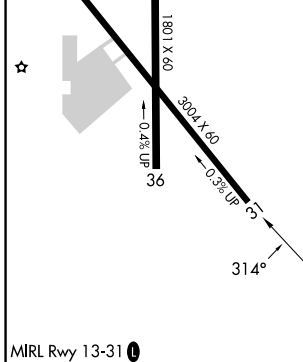
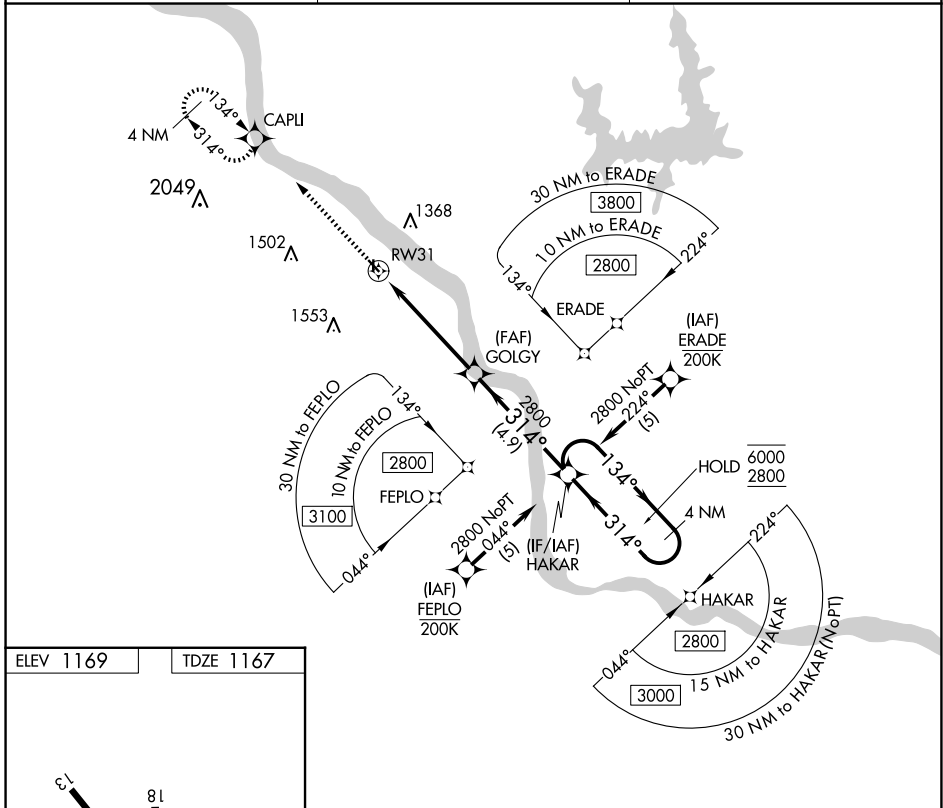
APP CRS <b>314°</b>	Rwy ldg TDZE Apt Elev	<b>3004</b> <b>1167</b> <b>1169</b>
------------------------	-----------------------------	---

# RNAV (GPS) RWY 31

DAVID JAY PERRY (1K4)

RNP APCH - GPS.	<p><b>▼</b> Rwy 31 helicopter visibility reduction below 1 SM NA.</p> <p><b>▲</b> NA Procedure NA at night. Use OKC altimeter setting.</p>	<p>MISSED APPROACH: Climb to 3100 direct CAPLI and hold, continue climb-in-hold to 3100.</p>
-----------------	--	--

OKC ASOS <b>125.85</b>	OKE CITY APP CON <b>120.45 288.325</b>	UNICOM <b>122.7</b> (CTAF) <b>0</b>
---------------------------	---	--



CATEGORY	A	B	C	D
LNAV MDA	1680-1	513 (600-1)	1680-1 $\frac{3}{8}$ 513 (600-1 $\frac{3}{8}$ )	NA
CIRCLING	1700-1 531 (600-1)	1840-1 671 (700-1)	1920-2 $\frac{1}{4}$ 751 (800-2 $\frac{1}{4}$ )	NA

SC-1, 11 JUN 2026 to 09 JUL 2026

SC-1, 11 JUN 2026 to 09 JUL 2026