

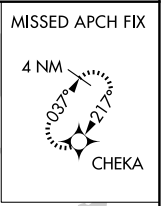
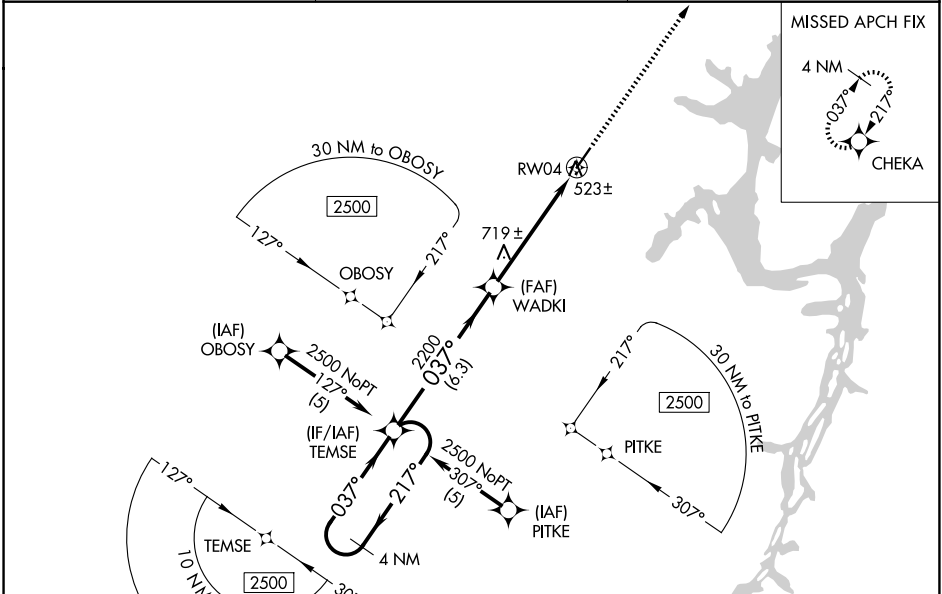
WAAS CH 77814 W04A	APP CRS 037°	Rwy Idg TDZE 468 Apt Elev 468	5001
--	------------------------	---	-------------

RNAV (GPS) RWY 4

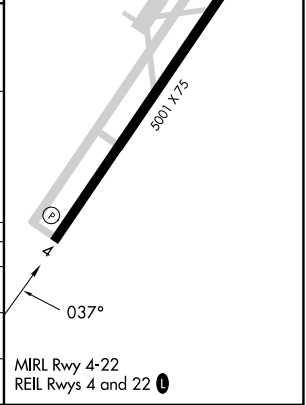
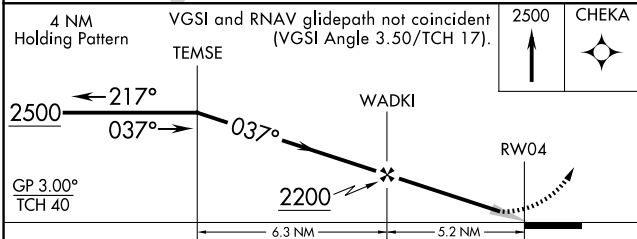
BENTON COUNTY (M4)

RNP APCH - GPS.	MISSED APPROACH: Climb to 2500 direct CHEKA and hold.
-----------------	---

PVE AWOS-3 118.125	MEMPHIS CENTER 125.85 379.25	UNICOM 122.8 (CTAF) 0
------------------------------	--	---------------------------------



ELEV 468	TDZE 468
----------	----------



CATEGORY	A	B	C	D
LPV DA	771-1	303 (400-1)		NA
LNAY/VNAV DA	944-1¾	476 (500-1¾)		NA
LNAY MDA	1040-1	572 (600-1)	1040-1⅝ 572 (600-1⅝)	NA

MIRL Rwy 4-22
REIL Rwy 4 and 22 0

SE-1, 11 JUN 2026 to 09 JUL 2026

SE-1, 11 JUN 2026 to 09 JUL 2026