

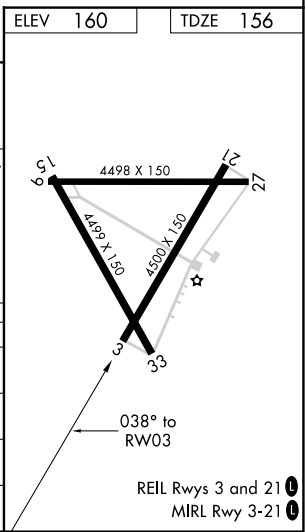
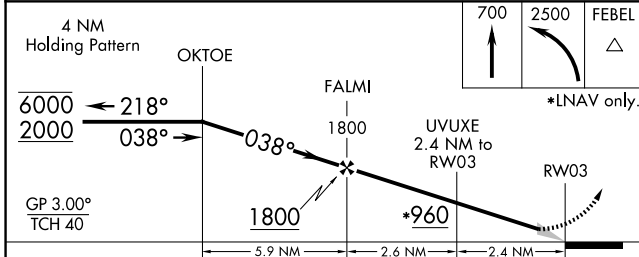
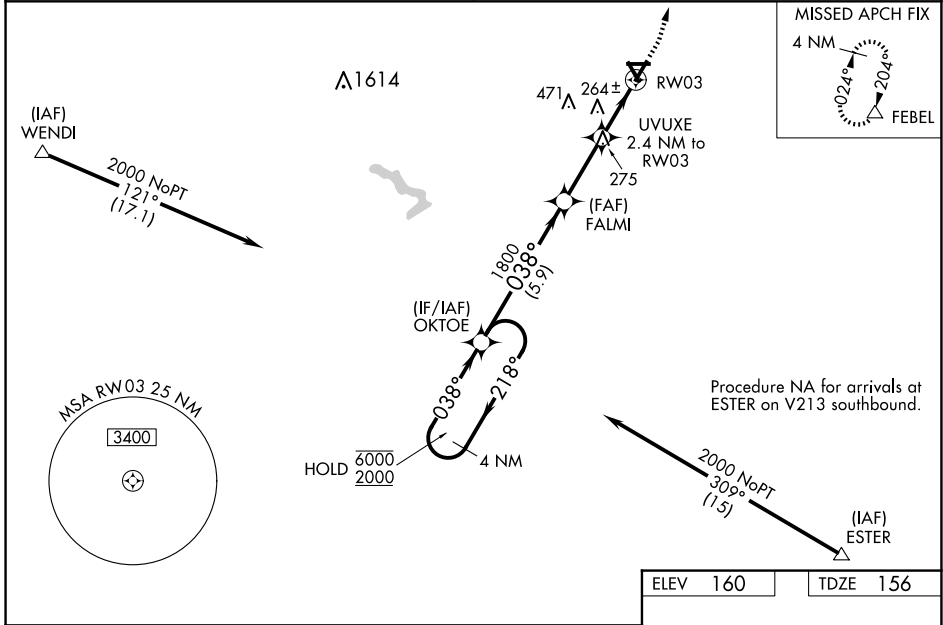
WAAS CH 69339 W03A	APP CRS 038°	Rwy Idg TDZE 156 Apt Elev 160	4500
--	------------------------	---	-------------

RNAV (GPS) RWY 3

WILSON INDUSTRIAL AIR CENTER (W03)

RNP APCH.	<p>Baro-VNAV NA when using Rocky Mount altimeter setting. For uncompensated Baro-VNAV systems, LNAV/VNAV NA below -15°C or above 54°C. Obtain local altimeter setting on CTAF; when not received, use Rocky Mount altimeter setting: increase LPV DA to 421 and visibility all Cats 1/8 SM; increase LNAV/VNAV DA to 439; increase all MDA 20 feet and LNAV visibility Cats C and D 1/8 SM. Circling Rwy 9, 15, 27, 33 NA at night.</p>	<p>MISSED APPROACH: Climb to 700, then climbing left turn to 2500 direct FEBEL and hold.</p>
-----------	---	--

WASHINGTON CENTER 123.85 279.65	UNICOM 123.0 (CTAF) 0
---	---------------------------------



CATEGORY	A	B	C	D
LPV DA		406-3/4	250 (300-3/4)	
LNAV/VNAV DA		424-7/8	268 (300-7/8)	
LNAV MDA	520-1	364 (400-1)	520-1 3/4 364 (400-1 3/4)	520-2 364 (400-2)
CIRCLING	660-1	500 (500-1)	780-1 3/4 620 (700-1 3/4)	780-2 620 (700-2)

SE-2, 11 JUN 2026 to 09 JUL 2026

SE-2, 11 JUN 2026 to 09 JUL 2026