

APP CRS	Rwy Idg	N/A
<b>184°</b>	TDZE	N/A
	Apt Elev	<b>1179</b>

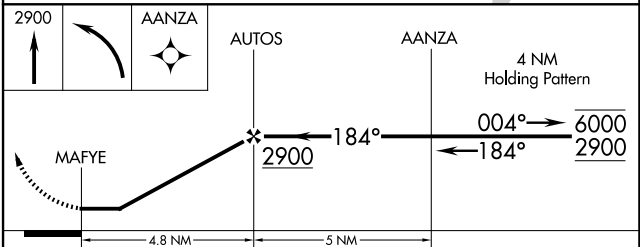
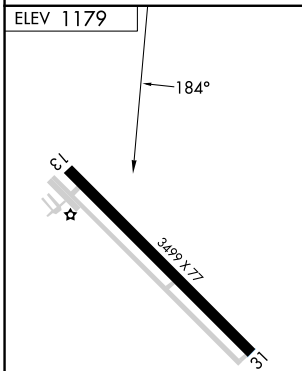
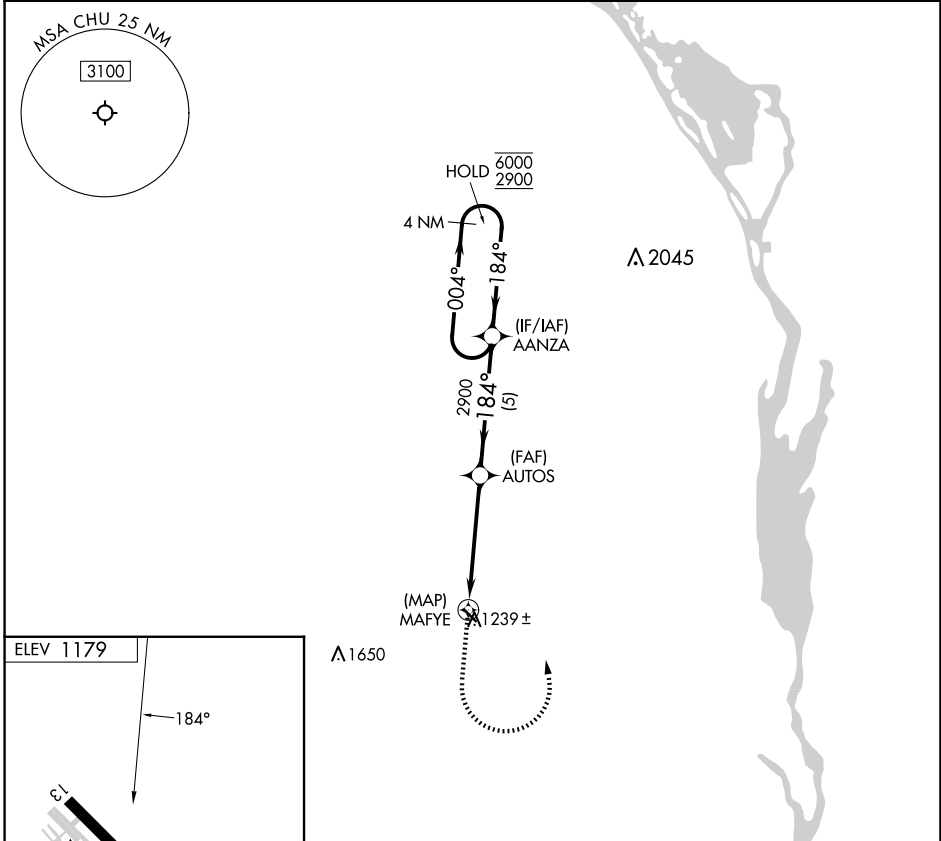
# RNAV (GPS)-B

HOUSTON COUNTY (CHU)

RNP APCH - GPS.  
 Procedure NA at night. Rwy 13 and 31 helicopter visibility reduction below 1 SM NA. Use La Crosse Rgnl altimeter setting.

MISSED APPROACH: Climb to 2900 then left turn direct AANZA and hold.

LSE ASOS <b>124.95</b>	MINNEAPOLIS CENTER <b>128.6 363.0</b>	CTAF <b>122.9</b>
---------------------------	--	----------------------



CATEGORY	A	B	C	D
CIRCLING	1820-1	641 (700-1)	NA	

NC-1, 11 JUN 2026 to 09 JUL 2026

NC-1, 11 JUN 2026 to 09 JUL 2026