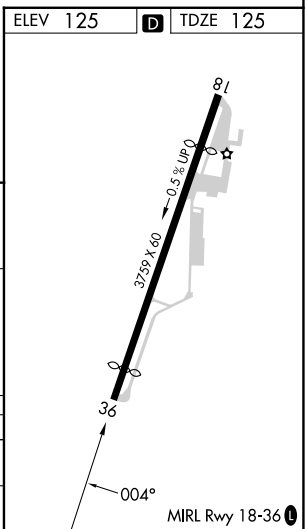
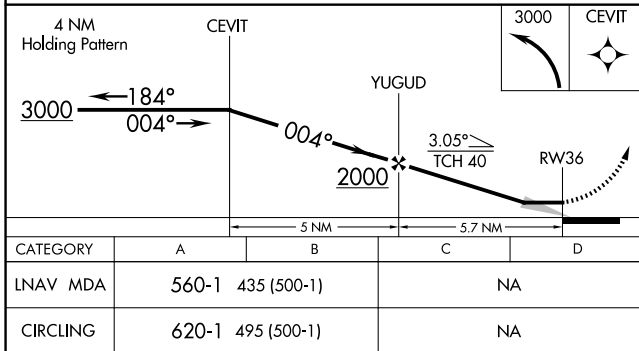
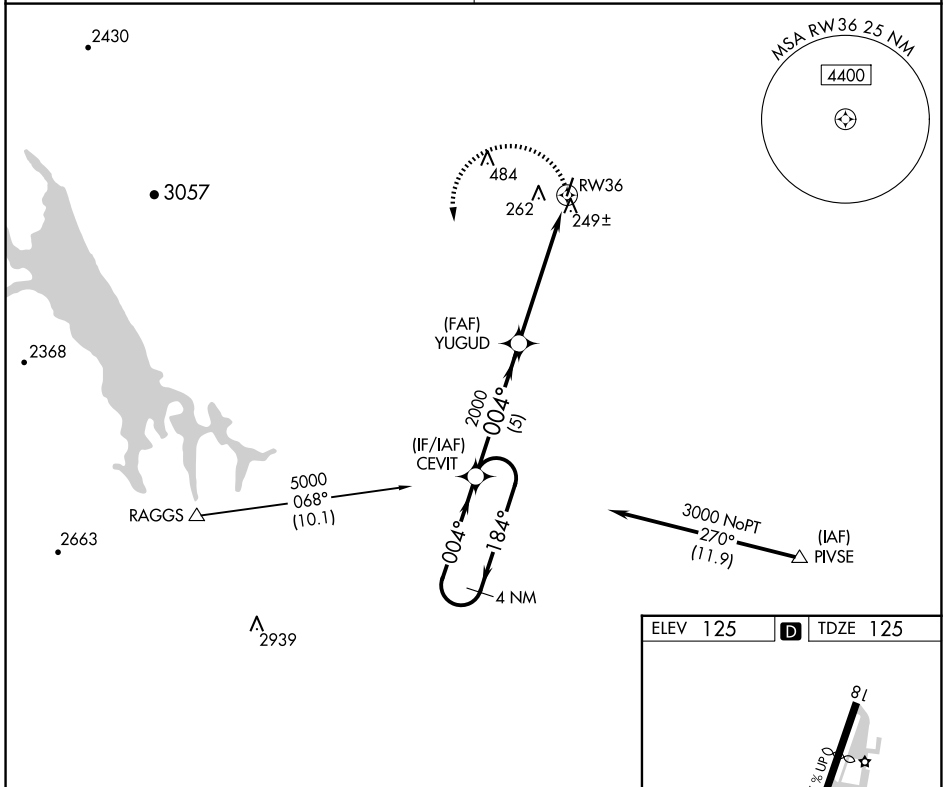


APP CRS	Rwy Idg	3244
004°	TDZE	125
	Apt Elev	125

RNAV (GPS) RWY 36

WATTS-WOODLAND (O41)

<p>NA Procedure NA at night. Use Sacramento Infil altimeter setting; when not received, use Sacramento Exec altimeter setting and increase all MDA 20 feet.</p>	<p>MISSED APPROACH: Climbing left turn to 3000 direct CEVIT and hold.</p>
<p>TRAVIS APP CON 126.6 281.45</p>	<p>UNICOM 122.8 (CTAF) 0</p>



SW-2, 11 JUN 2026 to 09 JUL 2026

SW-2, 11 JUN 2026 to 09 JUL 2026