

WAAS CH <b>56330</b> <b>W15A</b>	APP CRS <b>155°</b>	Rwy Ldg TDZE Apt Elev	<b>5201</b> <b>4038</b> <b>4038</b>
--	------------------------	-----------------------------	---

# RNAV (GPS) RWY 15

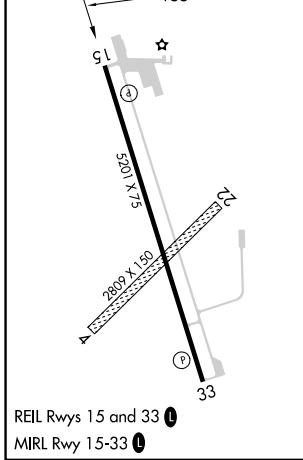
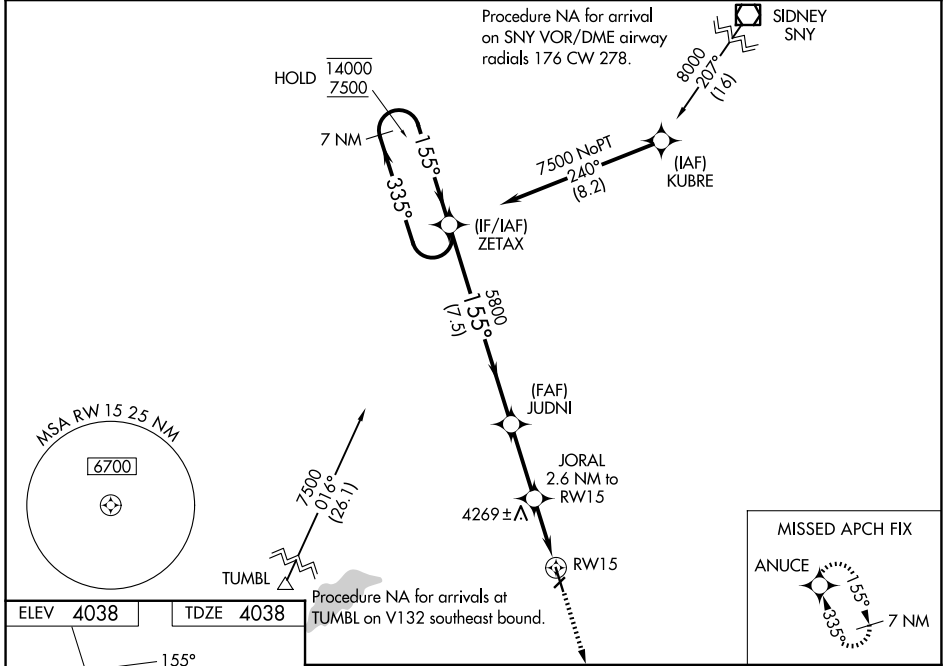
STERLING MUNI (STK)

RNP APCH.

**⚠** Circling NA to Rws 4 and 22. Rwy 15 helicopter visibility reduction below 3/4 SM NA. For uncompensated Baro-VNAV systems, LNAV/VNAV NA below -22°C or above 54°C.

MISSED APPROACH:  
Climb to 6400 direct ANUCE and hold.

AWOS-3 <b>118.525</b>	DENVER CENTER <b>118.475 225.4</b>	UNICOM <b>122.8 (CTAF)</b> <b>📶</b>
--------------------------	---------------------------------------	--



7 NM Holding Pattern		ZETAX	JUDNI	JORAL	ANUCE
14000	7500	5800	5800	6400	ANUCE
GP 3.00° TCH 44		*4900		*LNAV only.	
7.5 NM		2.8 NM	1.3 NM	1.3 NM	
CATEGORY	A	B	C	D	
LPV DA	4288-1		250 (300-1)		
LNAV/VNAV DA	4288-1		250 (300-1)		
LNAV MDA	4480-1	442 (500-1)	4480-1 3/8	442 (500-1 3/8)	
CIRCLING	4520-1 482 (500-1)	4580-1 542 (600-1)	4620-1 1/2 582 (600-1 1/2)	4720-2 1/4 682 (700-2 1/4)	

SW-1, 11 JUN 2026 to 09 JUL 2026

SW-1, 11 JUN 2026 to 09 JUL 2026