

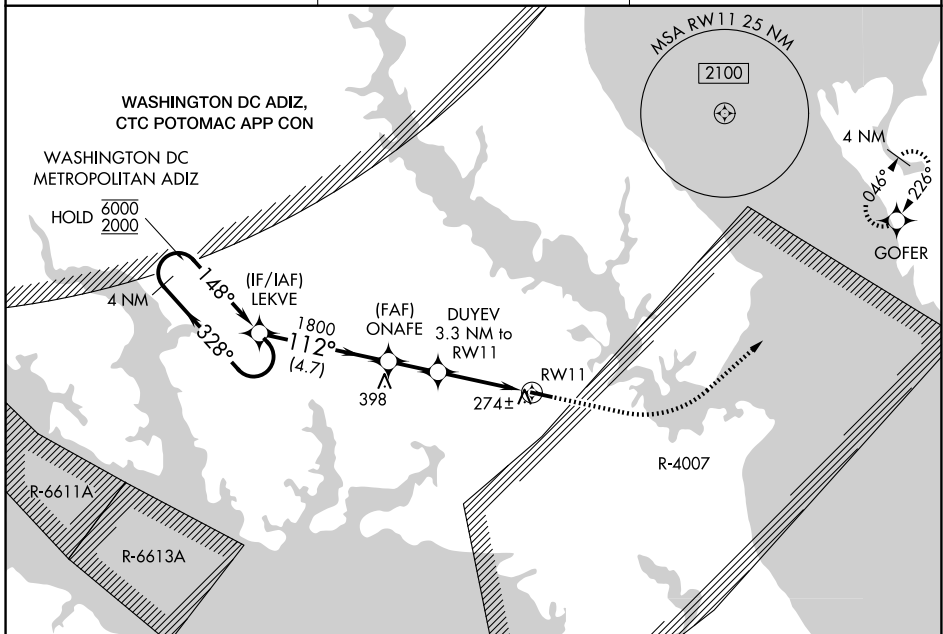
WAAS CH 70502 W11A	APP CRS 112°	Rwy Ldg TDZE 142 Apt Elev 142	5350
--	------------------------	---	-------------

RNAV (GPS) RWY 11

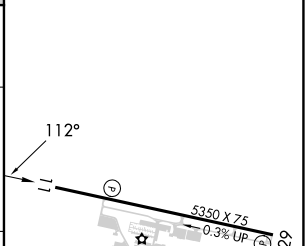
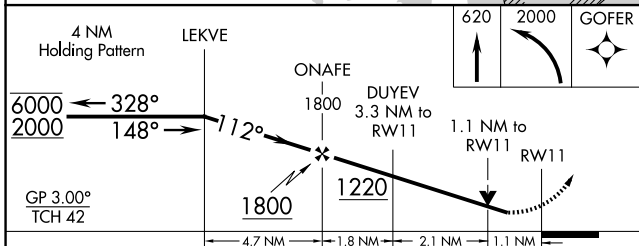
ST MARY'S COUNTY RGNL (2W6)

RNP APCH - GPS.	<p>⚠ Circling Rwy 29 NA at night. Rwy 11 helicopter visibility reduction below 3/4 SM NA.</p> <p>⚠ NA For uncompensated Baro-VNAV systems, LNAV/VNAV NA below -15°C or above 54°C.</p>	<p>MISSED APPROACH: Climb to 620 then climbing left turn to 2000 direct GOFER and hold.</p>
-----------------	--	---

AWOS-3 119.575	PATUXENT APP CON ★ 121.0 250.3	UNICOM 123.0 (CTAF) 0
--------------------------	--	---------------------------------



ELEV 142	TDZE 142
----------	----------



CATEGORY	A	B	C	D
LPV DA		419-1	277 (300-1)	
LNAV/VNAV DA		503-1	361 (400-1)	
LNAV MDA	540-1	398 (400-1)	540-1 1/8	398 (400-1 1/8)
CIRCLING	660-1	518 (600-1)	840-2 698 (700-2)	840-2 1/4 698 (700-2 1/4)

REIL Rwy 11 and 29 0
MIRL Rwy 11-29 0

NE-3, 11 JUN 2026 to 09 JUL 2026

NE-3, 11 JUN 2026 to 09 JUL 2026