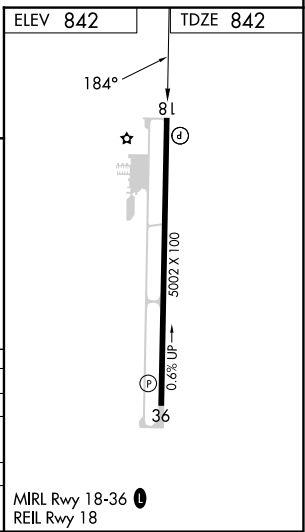
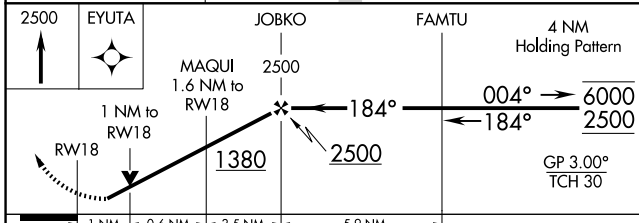
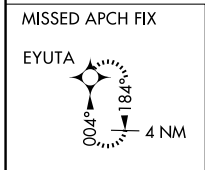
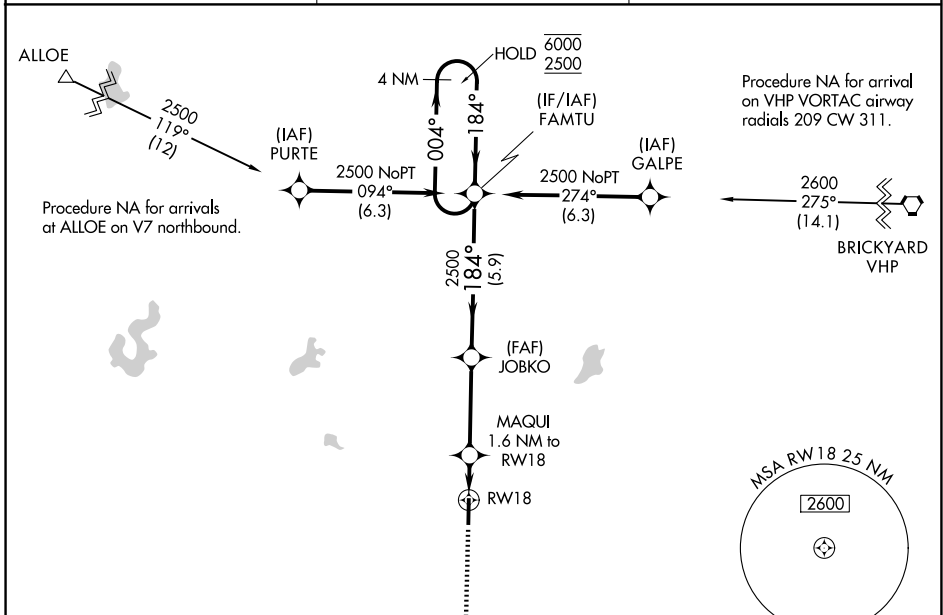


WAAS CH 86906 W18A	APP CRS 184°	Rwy Ldg 5002 TDZE 842 Apt Elev 842
--	------------------------	---

RNAV (GPS) RWY 18

PUTNAM COUNTY RGNL (GPC)

RNP APCH - GPS.		MISSED APPROACH: Climb to 2500 direct EYUTA and hold.
AWOS-3PT 118.125	INDIANAPOLIS APP CON 119.05 317.8	UNICOM 122.8 (CTAF) ①



2500	EYUTA	JOBKO	FAMTU	4 NM Holding Pattern
↑	★	MAQUI 1.6 NM to RW18	2500	6000 2500
1 NM to RW18	1380	184°	004°	GP 3.00° TCH 30
1 NM	0.6 NM	3.5 NM	5.9 NM	
CATEGORY	A	B	C	D
LPV DA		1107-7/8	265 (300-7/8)	
LNAV/VNAV DA		1124-7/8	282 (300-7/8)	
LNAV MDA		1200-1	358 (400-1)	
CIRCLING	1280-1 438 (500-1)	1400-1 558 (600-1)	1480-1 3/4 638 (700-1 3/4)	1600-2 1/2 758 (800-2 1/2)

EC-2, 11 JUN 2026 to 09 JUL 2026

EC-2, 11 JUN 2026 to 09 JUL 2026