

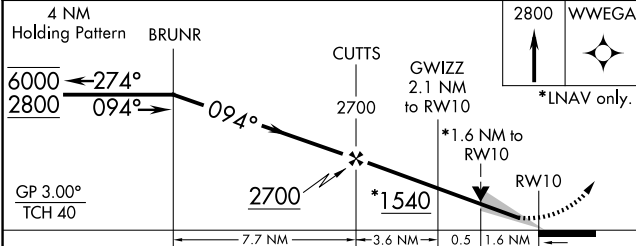
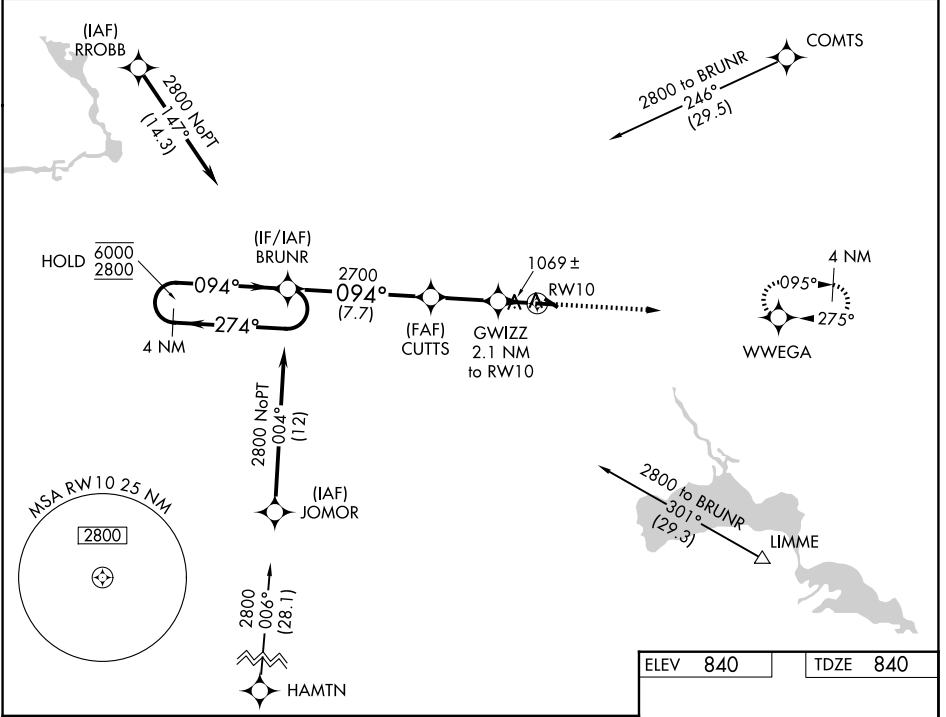
WAAS CH 63120 W10A	APP CRS 094°	Rwy Ldg TDZE Apt Elev	5200 840 840
--	------------------------	-----------------------------	---

RNAV (GPS) RWY 10

WAUPACA MUNI (PCZ)

RNP APCH. ▼ For uncompensated Baro-VNAV systems, LNAV/VNAV ▲ NA below -16°C or above 54°C.	MISSED APPROACH: Climb to 2800 direct WWEGA and hold.
--	--

AWOS-3 118.625	MINNEAPOLIS CENTER 124.4 317.7	UNICOM 122.8 (CTAF) 0
--------------------------	--	---------------------------------



ELEV 840	TDZE 840
----------	----------

094°	13	3899 X 75	0.6% UP	82	31
094°	10	5200 X 100	0.7% UP	82	31

REIL Rwy 10 and 28
MIRL Rwy 10-28 and 13-31

CATEGORY	A	B	C	D
LPV DA		1090-3/4	250 (300-3/4)	
LNAV/VNAV DA		1384-15/8	544 (600-15/8)	
LNAV MDA	1380-1	540 (600-1)	1380-1 1/2	540 (600-1 1/2)
CIRCLING	1380-1 540 (600-1)	1420-1 580 (600-1)	1420-1 1/2 580 (600-1 1/2)	1500-2 660 (700-2)

EC-3, 11 JUN 2026 to 09 JUL 2026

EC-3, 11 JUN 2026 to 09 JUL 2026