

RNAV (GPS) RWY 7

MASON COUNTY (3I2)

APP CRS	Rwy Ldg	4000
072°	TDZE	643
	Apt Elev	643

RNP APCH - GPS.

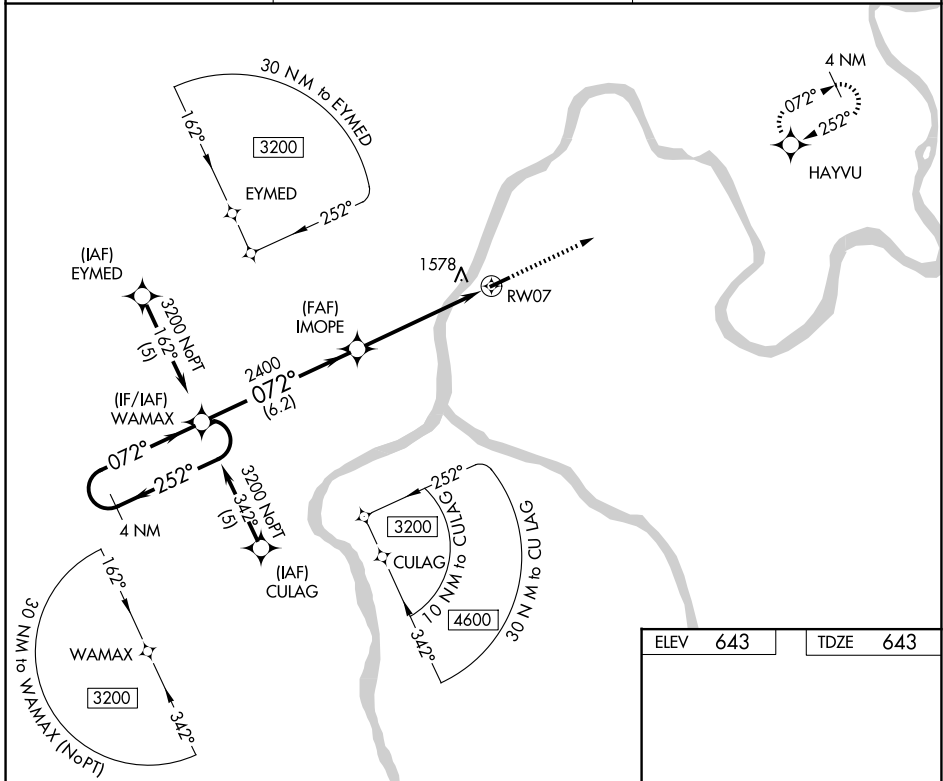
⚠ Circling NA NW of Rwy 7-25. Rwy 7 helicopter visibility reduction below 3/4 SM NA.
⚠ When local altimeter setting not received, use Athens/Albany, OH altimeter setting and increase all MDA 80 feet. Straight-in and Circling NA at night to Rwy 7.
⚠ -16°C

MISSED APPROACH:
 Climb to 2700 direct HAYVU and hold.

AWOS-3
119.675

HUNTINGTON APP CON
128.4 270.1

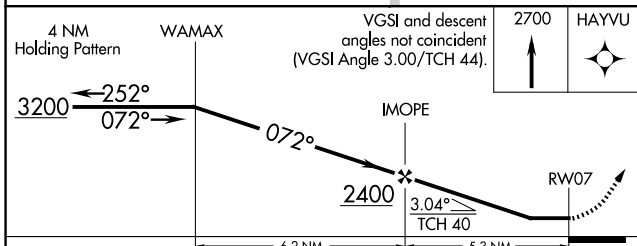
UNICOM
122.8 (CTAF) 0



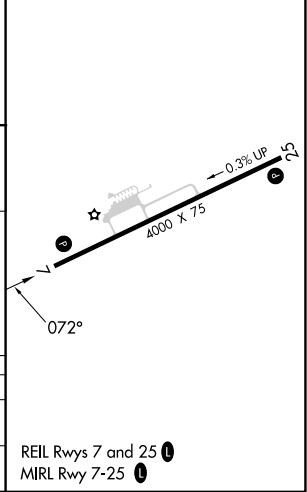
NE-4, 11 JUN 2026 to 09 JUL 2026

NE-4, 11 JUN 2026 to 09 JUL 2026

ELEV	643	TDZE	643
------	------------	------	------------



CATEGORY	A	B	C	D
LNVA MDA	1880-1¼ 1237 (1300-1¼)	1880-1½ 1237 (1300-1½)	1880-3	1237 (1300-3)
CIRCLING	1880-1¼ 1237 (1300-1¼)	1880-1½ 1237 (1300-1½)	1880-3	1237 (1300-3)



REIL Rwy 7 and 25 **0**
 MIRL Rwy 7-25 **0**